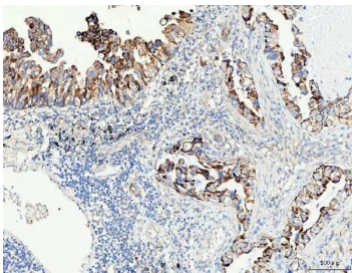


Proline dehydrogenase 1 Antibody / PRODH (RQ8300)

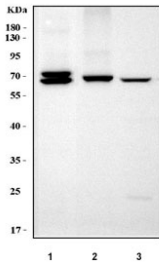
Catalog No.	Formulation	Size
RQ8300	0.5mg/ml if reconstituted with 0.2ml sterile DI water	100 ug

Bulk quote request

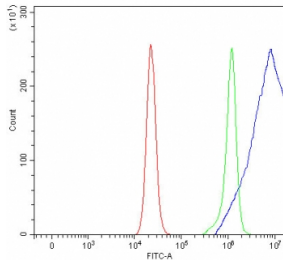
Availability	1-3 business days
Species Reactivity	Human, Mouse, Rat
Format	Antigen affinity purified
Host	Rabbit
Clonality	Polyclonal (rabbit origin)
Isotype	Rabbit IgG
Purity	Antigen affinity purified
Buffer	Lyophilized from 1X PBS with 2% Trehalose
UniProt	O43272
Localization	Cytoplasm
Applications	Western Blot : 0.5-1ug/ml Immunohistochemistry (FFPE) : 2-5ug/ml Flow Cytometry : 1-3ug/million cells Direct ELISA : 0.1-0.5ug/ml
Limitations	This Proline dehydrogenase 1 antibody is available for research use only.



IHC staining of FFPE human lung adenocarcinoma tissue with Proline dehydrogenase 1 antibody. HIER: boil tissue sections in pH8 EDTA for 20 min and allow to cool before testing.



Western blot testing of 1) rat liver, 2) mouse liver and 3) mouse kidney tissue lysate with Proline dehydrogenase 1 antibody. Predicted molecular weight: 56-68 kDa (multiple isoforms).



Flow cytometry testing of fixed and permeabilized human RT4 cells with Proline dehydrogenase 1 antibody at 1ug/million cells (blocked with goat sera); Red=cells alone, Green=isotype control, Blue= Proline dehydrogenase 1 antibody.

Description

Proline dehydrogenase, mitochondrial is an enzyme that in humans is encoded by the *PRODH* gene. This gene encodes a mitochondrial protein that catalyzes the first step in proline degradation. Mutations in this gene are associated with hyperprolinemia type 1 and susceptibility to schizophrenia 4 (SCZD4). This gene is located on chromosome 22q11.21, a region which has also been associated with the contiguous gene deletion syndromes, DiGeorge and CATCH22. Alternatively spliced transcript variants encoding different isoforms have been found for this gene.

Application Notes

Optimal dilution of the Proline dehydrogenase 1 antibody should be determined by the researcher.

Immunogen

An E.coli-derived human recombinant protein (H116-E433) was used as the immunogen for the Proline dehydrogenase 1 antibody.

Storage

After reconstitution, the Proline dehydrogenase 1 antibody can be stored for up to one month at 4°C. For long-term, aliquot and store at -20°C. Avoid repeated freezing and thawing.