

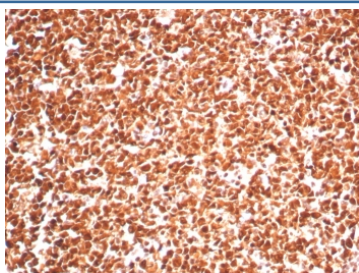
Proliferating Cell Nuclear Antigen Antibody / PCNA [clone PCNA/8303R] (V4803)

Catalog No.	Formulation	Size
V4803-100UG	0.2 mg/ml in 1X PBS with 0.1 mg/ml BSA (US sourced), 0.05% sodium azide	100 ug
V4803-20UG	0.2 mg/ml in 1X PBS with 0.1 mg/ml BSA (US sourced), 0.05% sodium azide	20 ug
V4803SAF-100UG	1 mg/ml in 1X PBS; BSA free, sodium azide free	100 ug

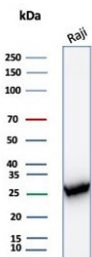
Recombinant **RABBIT MONOCLONAL**

[Bulk quote request](#)

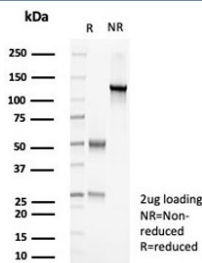
Availability	1-3 business days
Species Reactivity	Human
Format	Purified
Clonality	Recombinant Rabbit Monoclonal
Isotype	Rabbit IgG, kappa
Clone Name	PCNA/8303R
Purity	Protein A/G affinity
UniProt	P12004
Localization	Nucleus, Cytoplasm
Applications	Western Blot : 1-2ug/ml Immunohistochemistry (FFPE) : 1-2ug/ml for 30 min at RT
Limitations	This Proliferating Cell Nuclear Antigen antibody is available for research use only.



IHC staining of FFPE human tonsil tissue with Proliferating Cell Nuclear Antigen antibody (clone PCNA/8303R). HIER: boil tissue sections in pH 9 10mM Tris with 1mM EDTA for 20 min and allow to cool before testing.



Western blot testing of human Raji cell lysate with Proliferating Cell Nuclear Antigen antibody (clone PCNA/8303R). Predicted molecular weight ~29 kDa, routinely observed at 29~36 kDa.



SDS-PAGE analysis of purified, BSA-free Proliferating Cell Nuclear Antigen antibody (clone PCNA/8303R) as confirmation of integrity and purity.

Description

Recognizes a non-histone protein of 36kDa, which is identified as proliferating cell nuclear antigen (PCNA). It is also known as cyclin or polymerase delta auxiliary protein. Elevated expression of PCNA/cyclin has been shown in the nucleus during late G1 phase immediately before the onset of DNA synthesis, becoming maximal during S-phase and declining during G2 and M phases. This mAb is excellent for multiple applications.

Application Notes

Optimal dilution of the Proliferating Cell Nuclear Antigen antibody should be determined by the researcher.

Immunogen

Recombinant full-length human protein was used as the immunogen for the Proliferating Cell Nuclear Antigen antibody.

Storage

Aliquot the Proliferating Cell Nuclear Antigen antibody and store frozen at -20oC or colder. Avoid repeated freeze-thaw cycles.