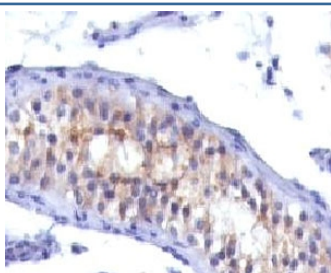


Prolactin Receptor Antibody [clone PRLR742] (V2235)

Catalog No.	Formulation	Size
V2235-100UG	0.2 mg/ml in 1X PBS with 0.1 mg/ml BSA (US sourced) and 0.05% sodium azide	100 ug
V2235-20UG	0.2 mg/ml in 1X PBS with 0.1 mg/ml BSA (US sourced) and 0.05% sodium azide	20 ug
V2235SAF-100UG	1 mg/ml in 1X PBS; BSA free, sodium azide free	100 ug
V2235IHC-7ML	Prediluted in 1X PBS with 0.1 mg/ml BSA (US sourced) and 0.05% sodium azide; *For IHC use only*	7 ml

[Bulk quote request](#)

Species Reactivity	Human
Format	Purified
Host	Mouse
Clonality	Monoclonal (mouse origin)
Isotype	Mouse IgG1, kappa
Clone Name	PRLR742
Purity	Protein G affinity chromatography
Buffer	1X PBS, pH 7.4
Gene ID	5618
Localization	Cell surface and cytoplasmic
Applications	Immunohistochemistry (FFPE) : 1-2ug/ml for 30 min at RT
Limitations	This Prolactin Receptor antibody is available for research use only.



IHC testing of testicular carcinoma with Prolactin receptor antibody (clone PRLR742).

Description

This antibody recognizes a protein of 70kDa, identified as prolactin receptor. Prolactin is a pituitary hormone involved in the stimulation of milk production, salt and water regulation, growth, development and reproduction. The initial step in its action is the binding to a specific membrane receptor, which belongs to the superfamily of class 1 cytokine receptors. The function of the prolactin receptor is mediated, at least in part, by two families of signaling molecules: Janus kinases and signal transducers and activators of transcription.

Application Notes

The concentration stated for each application is a general starting point. Variations in protocols, secondaries and substrates may require the Prolactin receptor antibody to be titrated up or down for optimal performance.

1. Staining of formalin/paraffin tissues requires digestion of tissue sections with pepsin at 1mg/ml Tris-HCl, pH 2.0 for 15 min at RT or 10 min at 37C.
2. The prediluted format is supplied in a dropper bottle and is optimized for use in IHC. After epitope retrieval step (if required), drip mAb solution onto the tissue section and incubate at RT for 30 min.

Immunogen

Recombinant human protein was used as the immunogen for this Prolactin receptor antibody.

Storage

Store the Prolactin receptor antibody at 2-8oC (with azide) or aliquot and store at -20oC or colder (without azide).

Alternate Names

CPRLP, hPRLR, hPRLrI, Lactogen receptor, OPR, Pr-1, Pr-3, PRL-R, RATPRLR, Secreted prolactin binding protein, Prolactin Receptor antibody

References (3)