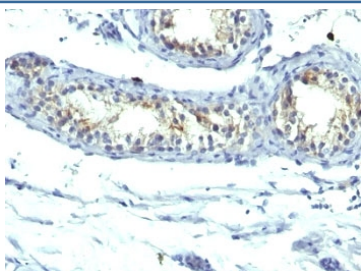


## Prolactin Receptor Antibody Cocktail [clone B6.2 + PRLR742] (V3172)

Catalog No.	Formulation	Size
V3172-100UG	0.2 mg/ml in 1X PBS with 0.1 mg/ml BSA (US sourced) and 0.05% sodium azide	100 ug
V3172-20UG	0.2 mg/ml in 1X PBS with 0.1 mg/ml BSA (US sourced) and 0.05% sodium azide	20 ug
V3172SAF-100UG	1 mg/ml in 1X PBS; BSA free, sodium azide free	100 ug
V3172IHC-7ML	Prediluted in 1X PBS with 0.1 mg/ml BSA (US sourced) and 0.05% sodium azide; *For IHC use only*	7 ml

**Bulk quote request**

<b>Availability</b>	1-3 business days
<b>Species Reactivity</b>	Human
<b>Format</b>	Purified
<b>Clonality</b>	Monoclonal (mouse origin)
<b>Isotype</b>	Mouse IgG1 + IgG1
<b>Clone Name</b>	B6.2 + PRLR742
<b>Purity</b>	Protein G affinity chromatography
<b>UniProt</b>	P16471
<b>Localization</b>	Cell surface and cytoplasmic
<b>Applications</b>	Immunohistochemistry (FFPE) : 1-2ug/ml for 30 min at RT
<b>Limitations</b>	This Prolactin Receptor antibody cocktail is available for research use only.



IHC: Formalin-fixed, paraffin-embedded human testicular carcinoma stained with Prolactin Receptor antibody (B6.2 + PRLR742).

## Description

It recognizes a protein of 70kDa, identified as prolactin receptor. Prolactin is a pituitary hormone involved in the stimulation of milk production, salt and water regulation, growth, development and reproduction. The initial step in its action is the binding to a specific membrane receptor (prolactin receptor), which belongs to the superfamily of class 1 cytokine receptors. The function of the prolactin receptor is mediated, at least in part, by two families of signaling molecules: Janus kinases and signal transducers and activators of transcription.

## Application Notes

The optimal dilution of the Prolactin Receptor antibody for each application should be determined by the researcher.

1. Staining of formalin-fixed tissues requires boiling tissue sections in pH 9 10mM Tris with 1mM EDTA for 10-20 min followed by cooling at RT for 20 minutes.
2. The prediluted format is supplied in a dropper bottle and is optimized for use in IHC. After epitope retrieval step (if required), drip mAb solution onto the tissue section and incubate at RT for 30 min.

## Immunogen

Semi-purified human prolactin receptor (B6.2) and recombinant human protein (PRLR742) were used as the immunogens for this Prolactin Receptor antibody cocktail.

## Storage

Store the Prolactin Receptor antibody cocktail at 2-8oC (with azide) or aliquot and store at -20oC or colder (without azide).