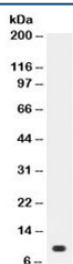


Prolactin Antibody (R31899)

Catalog No.	Formulation	Size
R31899	0.5mg/ml if reconstituted with 0.2ml sterile DI water	100 ug

[Bulk quote request](#)

Availability	1-3 business days
Species Reactivity	Mouse
Format	Antigen affinity purified
Clonality	Polyclonal (rabbit origin)
Isotype	Rabbit IgG
Purity	Antigen affinity
Buffer	Lyophilized from 1X PBS with 2.5% BSA and 0.025% sodium azide
UniProt	P06879
Applications	Western Blot : 0.1-0.5ug/ml ELISA : 0.1-0.5ug/ml (human protein tested); request BSA-free format for coating
Limitations	This Prolactin antibody is available for research use only.



Western blot testing of recombinant mouse protein with Prolactin antibody. Expected size ~10 kDa.

Description

Prolactin (PRL) also known as luteotropic hormone (LTH) is a protein that in humans is encoded by the PRL gene. Prolactin is a peptide hormone discovered by Henry Friesen. Although it is perhaps best known for its role in lactation, prolactin already existed in the oldest known vertebrates—fishes—where its most important functions were probably related to control of water and salt balance. Prolactin also acts in a cytokine-like manner and as an important regulator of the immune system. Prolactin has important cell cycle related functions as a growth-, differentiating- and anti-apoptotic factor. As a growth factor binding to cytokine like receptors it has also profound influence on hematopoiesis, angiogenesis and is involved in the regulation of blood clotting through several pathways.

Application Notes

Optimal dilution of the Prolactin antibody should be determined by the researcher.

Immunogen

Amino acids 30-226 of mouse Prolactin were used as the immunogen for the Prolactin antibody.

Storage

After reconstitution, the Prolactin antibody can be stored for up to one month at 4oC. For long-term, aliquot and store at -20oC. Avoid repeated freezing and thawing.