

Prolactin Antibody / PRL [clone PRL/2910] (V7538)

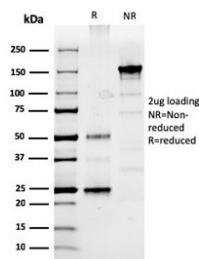
Catalog No.	Formulation	Size
V7538-100UG	0.2 mg/ml in 1X PBS with 0.1 mg/ml BSA (US sourced) and 0.05% sodium azide	100 ug
V7538-20UG	0.2 mg/ml in 1X PBS with 0.1 mg/ml BSA (US sourced) and 0.05% sodium azide	20 ug
V7538SAF-100UG	1 mg/ml in 1X PBS; BSA free, sodium azide free	100 ug
V7538IHC-7ML	Prediluted in 1X PBS with 0.1 mg/ml BSA (US sourced) and 0.05% sodium azide; *For IHC use only*	7 ml

Bulk quote request

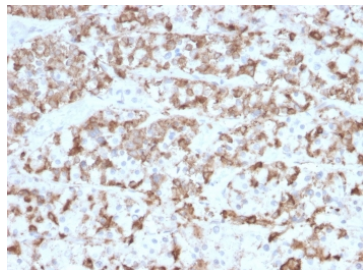
Availability	1-3 business days
Species Reactivity	Human
Format	Purified
Clonality	Monoclonal (mouse origin)
Isotype	Mouse IgG2b, kappa
Clone Name	PRL/2910
Purity	Protein G affinity chromatography
UniProt	P01236
Applications	Immunohistochemistry (FFPE) : 1-2ug/ml for 30 min at RT Western Blot : 1-2ug/ml
Limitations	This Prolactin antibody is available for research use only.



Western blot testing of human U937 cell lysate with Prolactin antibody (clone PRL/2910). Predicted molecular weight: ~25 kDa.



SDS-PAGE analysis of purified, BSA-free Prolactin antibody (clone PRL/2910) as confirmation of integrity and purity.



IHC testing of FFPE human pituitary tissue with Prolactin antibody (clone PRL/2910). Required HIER: boil tissue sections in pH6, 10mM citrate buffer, for 10-20 min followed by cooling at RT for 20 min.

Description

Prolactin is a growth factor that is secreted by the anterior pituitary. It is necessary for the proliferation and differentiation of the mammary glands. Prolactin is useful in the classification of pituitary tumors and study of pituitary disease. It also plays a role in the development of mammary cancer, functioning dually as a mitogen and a differentiating agent.

Application Notes

Optimal dilution of the Prolactin antibody should be determined by the researcher.

1. The prediluted format is supplied in a dropper bottle and is optimized for use in IHC. After epitope retrieval step (if required), drip mAb solution onto the tissue section and incubate at RT for 30 min.

Immunogen

A recombinant human partial protein corresponding to amino acids 63-201 was used as the immunogen for the Prolactin antibody.

Storage

Store the Prolactin antibody at 2-8°C (with azide) or aliquot and store at -20°C or colder (without azide).