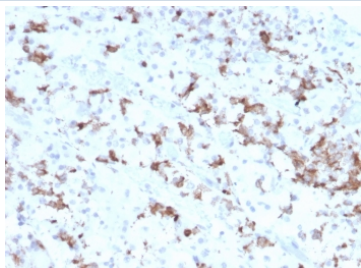


## Prolactin Antibody / PRL [clone PRL/2641] (V7620)

Catalog No.	Formulation	Size
V7620-100UG	0.2 mg/ml in 1X PBS with 0.1 mg/ml BSA (US sourced) and 0.05% sodium azide	100 ug
V7620-20UG	0.2 mg/ml in 1X PBS with 0.1 mg/ml BSA (US sourced) and 0.05% sodium azide	20 ug
V7620SAF-100UG	1 mg/ml in 1X PBS; BSA free, sodium azide free	100 ug
V7620IHC-7ML	Prediluted in 1X PBS with 0.1 mg/ml BSA (US sourced) and 0.05% sodium azide; *For IHC use only*	7 ml

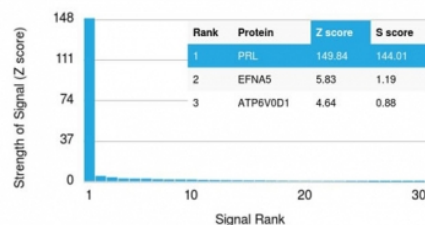
[Bulk quote request](#)

<b>Availability</b>	1-3 business days
<b>Species Reactivity</b>	Human
<b>Format</b>	Purified
<b>Clonality</b>	Monoclonal (mouse origin)
<b>Isotype</b>	Mouse IgG1, kappa
<b>Clone Name</b>	PRL/2641
<b>Purity</b>	Protein G affinity chromatography
<b>UniProt</b>	P01236
<b>Localization</b>	Cytoplasmic
<b>Applications</b>	Immunohistochemistry (FFPE) : 1-2ug/ml for 30 min at RT Western Blot : 1-2ug/ml
<b>Limitations</b>	This Prolactin antibody is available for research use only.



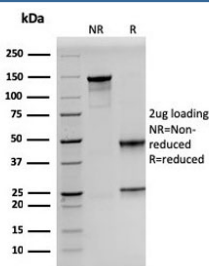
IHC testing of FFPE human pituitary tissue with Prolactin antibody (clone PRL/2641). Required HIER: boil tissue sections in pH6, 10mM citrate buffer, for 10-20 min followed by cooling at RT for 20 min.

#### Human Protein Microarray Specificity Validation

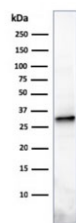


Analysis of HuProt(TM) microarray containing more than 19,000 full-length human proteins using Prolactin antibody (clone PRL/2641). These results demonstrate the foremost specificity of the PRL/2641 mAb.

Z- and S- score: The Z-score represents the strength of a signal that an antibody (in combination with a fluorescently-tagged anti-IgG secondary Ab) produces when binding to a particular protein on the HuProt(TM) array. Z-scores are described in units of standard deviations (SD's) above the mean value of all signals generated on that array. If the targets on the HuProt(TM) are arranged in descending order of the Z-score, the S-score is the difference (also in units of SD's) between the Z-scores. The S-score therefore represents the relative target specificity of an Ab to its intended target.



SDS-PAGE analysis of purified, BSA-free Prolactin antibody (clone PRL/2641) as confirmation of integrity and purity.



Western blot testing of human U937 cell lysate with Prolactin antibody (clone PRL/2641). Predicted molecular weight: ~25 kDa.

## Description

Prolactin is a growth factor that is secreted by the anterior pituitary. It is necessary for the proliferation and differentiation of the mammary glands. Prolactin is useful in the classification of pituitary tumors and study of pituitary disease. It also plays a role in the development of mammary cancer, functioning dually as a mitogen and a differentiating agent.

## Application Notes

Optimal dilution of the Prolactin antibody should be determined by the researcher.

1. The prediluted format is supplied in a dropper bottle and is optimized for use in IHC. After epitope retrieval step (if required), drip mAb solution onto the tissue section and incubate at RT for 30 min.

## Immunogen

A recombinant human partial protein corresponding to amino acids 63-201 was used as the immunogen for the Prolactin antibody.

## Storage

Store the Prolactin antibody at 2-8°C (with azide) or aliquot and store at -20°C or colder (without azide).

