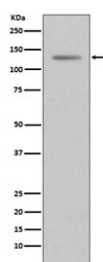


Progesterone Receptor Antibody [clone EFC-16] (RQ5142)

Catalog No.	Formulation	Size
RQ5142	Antibody in PBS with 0.02% sodium azide, 50% glycerol and 0.4-0.5mg/ml BSA	100 ul

[Bulk quote request](#)

Availability	1-2 weeks
Species Reactivity	Human
Format	Purified
Clonality	Rabbit Monoclonal
Isotype	Rabbit IgG
Clone Name	EFC-16
Purity	Affinity purified
UniProt	P06401
Applications	Western Blot : 1:1000-1:2000
Limitations	This Progesterone Receptor antibody is available for research use only.



Western blot testing of human T-47D cell lysate with Progesterone Receptor antibody.
Expected molecular weight: 82-94 kDa (PR-A) and 99-120 kDa (PR-B).

Description

The PGR gene encodes a member of the steroid receptor superfamily. The encoded protein mediates the physiological effects of progesterone, which plays a central role in reproductive events associated with the establishment and maintenance of pregnancy. This gene uses two distinct promoters and translation start sites in the first exon to produce several transcript variants, both protein coding and non-protein coding. Two of the isoforms (A and B) are identical except for an additional 165 amino acids found in the N-terminus of isoform B and mediate their own response genes and physiologic effects with little overlap. [RefSeq]

Application Notes

Optimal dilution of the Progesterone Receptor antibody should be determined by the researcher.

Immunogen

A synthetic peptide specific to human Progesterone Receptor / PGR was used as the immunogen for the Progesterone Receptor antibody.

Storage

Store the Progesterone Receptor antibody at -20oC.