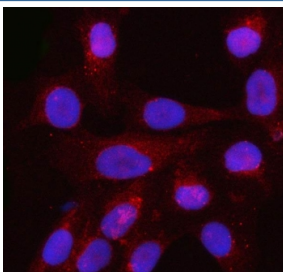


Profilin 3 Antibody / PFN3 (RQ7940)

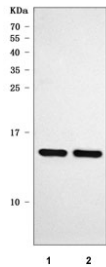
Catalog No.	Formulation	Size
RQ7940	0.5mg/ml if reconstituted with 0.2ml sterile DI water	100 ug

[Bulk quote request](#)

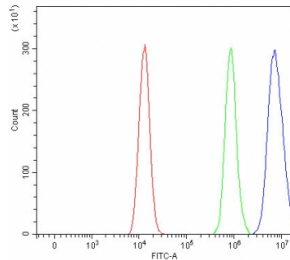
Availability	1-3 business days
Species Reactivity	Human, Mouse, Rat
Format	Antigen affinity purified
Host	Rabbit
Clonality	Polyclonal (rabbit origin)
Isotype	Rabbit IgG
Purity	Antigen affinity purified
Buffer	Lyophilized from 1X PBS with 2% Trehalose
UniProt	P60673
Applications	Western Blot : 0.5-1ug/ml Immunofluorescence (FFPE) : 5ug/ml Flow Cytometry : 1-3ug/million cells Direct ELISA : 0.1-0.5ug/ml
Limitations	This Profilin 3 antibody is available for research use only.



Immunofluorescent staining of FFPE human U-2 OS cells with Profilin 3 antibody (red) and DAPI nuclear stain (blue). HIER: steam section in pH6 citrate buffer for 20 min.



Western blot testing of 1) rat C6 and 2) mouse RAW264.7 cell lysate with Profilin 3 antibody. Predicted molecular weight ~15 kDa.



Flow cytometry testing of human HEL cells with Profilin 3 antibody at 1 ug/million cells (blocked with goat sera); Red=cells alone, Green=isotype control, Blue= Profilin 3 antibody.

Description

The product of this gene belongs to the profilin family of proteins. This protein binds to actin and affects the structure of the cytoskeleton. It also may be involved in spermatogenesis. It is a single exon gene.

Application Notes

Optimal dilution of the Profilin 3 antibody should be determined by the researcher.

Immunogen

E. coli-derived recombinant human protein (amino acids K5-R130) was used as the immunogen for the Profilin 3 antibody.

Storage

After reconstitution, the Profilin 3 antibody can be stored for up to one month at 4°C. For long-term, aliquot and store at -20°C. Avoid repeated freezing and thawing.