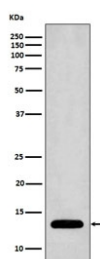


Profilin 1 Antibody [clone ABCD-16] (RQ5183)

Catalog No.	Formulation	Size
RQ5183	Antibody in PBS with 0.02% sodium azide, 50% glycerol and 0.4-0.5mg/ml BSA	100 ul

[Bulk quote request](#)

Availability	1-2 weeks
Species Reactivity	Human
Format	Purified
Host	Rabbit
Clonality	Rabbit Monoclonal
Isotype	Rabbit IgG
Clone Name	ABCD-16
Purity	Affinity purified
UniProt	P07737
Applications	Western Blot : 1:1000-1:5000
Limitations	This Profilin 1 antibody is available for research use only.



Western blot testing of human Jurkat cell lysate with Profilin 1 antibody. Predicted molecular weight ~15 kDa.

Application Notes

Optimal dilution of the Profilin 1 antibody should be determined by the researcher.

Immunogen

A synthetic peptide specific to human Profilin 1 / PFN1 was used as the immunogen for the Profilin 1 antibody.

Storage

Store the Profilin 1 antibody at -20oC.