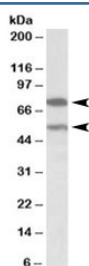


## PRODH Antibody (R33738)

Catalog No.	Formulation	Size
R33738-100UG	0.5 mg/ml in 1X TBS, pH7.3, with 0.5% BSA (US sourced) and 0.02% sodium azide	100 ug

[Bulk quote request](#)

Availability	1-3 business days
Species Reactivity	Human
Format	Antigen affinity purified
Clonality	Polyclonal (goat origin)
Isotype	Goat Ig
Purity	Antigen affinity
Gene ID	5625
Applications	Western Blot : 0.3-1ug/ml ELISA (peptide) LOD : 1:16000
Limitations	This PRODH antibody is available for research use only.



Western blot testing of human cerebellum lysate with PRODH antibody at 0.3ug/ml. Both isoforms are detected in this image.

## Description

Additional name(s) for this target protein: Proline dehydrogenase 1

## Application Notes

Optimal dilution of the PRODH antibody should be determined by the researcher.

## Immunogen

Amino acids EDQESIQPLLRHYR were used as the immunogen for this PRODH antibody. This sequence is common to

isoforms 1 (600 AA) and 2 (492 AA).

## **Storage**

Aliquot and store the PRODH antibody at -20oC.