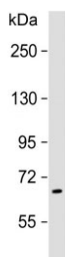


## PRODH Antibody (F54259)

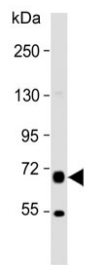
Catalog No.	Formulation	Size
F54259-0.4ML	In 1X PBS, pH 7.4, with 0.09% sodium azide	0.4 ml
F54259-0.08ML	In 1X PBS, pH 7.4, with 0.09% sodium azide	0.08 ml

[Bulk quote request](#)

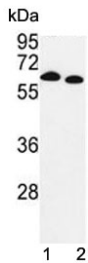
<b>Availability</b>	1-3 business days
<b>Species Reactivity</b>	Human, Mouse
<b>Format</b>	Purified
<b>Host</b>	Rabbit
<b>Clonality</b>	Polyclonal (rabbit origin)
<b>Isotype</b>	Rabbit Ig
<b>Purity</b>	Antigen affinity purified
<b>UniProt</b>	Q9WU79
<b>Gene ID</b>	19125
<b>Localization</b>	Cytoplasmic
<b>Applications</b>	Western Blot : 1:1000-1:2000 Immunohistochemistry (FFPE) : 1:25-1:100 Flow Cytometry : 1:25 (1x10e6 cells)
<b>Limitations</b>	This PRODH antibody is available for research use only.



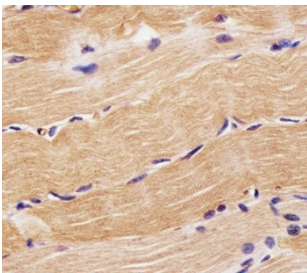
Western blot testing of human brain lysate with PRODH antibody. Predicted molecular weight: 68 kDa.



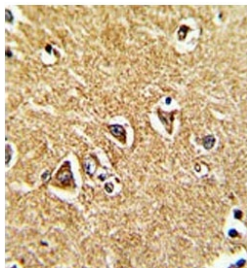
Western blot testing of human MDA-MB-468 cell lysate with PRODH antibody. Predicted molecular weight: 68 kDa.



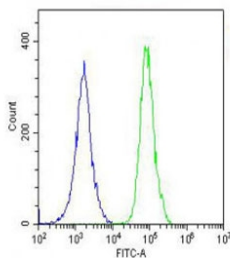
Western blot testing of mouse 1) liver and 2) kidney lysate with PRODH antibody. Predicted molecular weight: 68 kDa.



IHC testing of FFPE human skeletal muscle tissue with PRODH antibody. HIER: steam section in pH6 citrate buffer for 20 min and allow to cool prior to staining.



IHC testing of FFPE human brain tissue with PRODH antibody. HIER: steam section in pH6 citrate buffer for 20 min and allow to cool prior to staining.



Flow cytometry testing of fixed and permeabilized human A549 cells with PRODH antibody; Blue=isotype control, Green= PRODH antibody.

## Description

PRODH is a mitochondrial proline dehydrogenase that catalyzes the first step in proline degradation. It converts proline to delta-1-pyrroline-5-carboxylate.

## Application Notes

The stated application concentrations are suggested starting points. Titration of the PRODH antibody may be required due to differences in protocols and secondary/substrate sensitivity.

## **Immunogen**

A portion of amino acids 130-155 from the human protein were used as the immunogen for the PRODH antibody.

## **Storage**

Aliquot the PRODH antibody and store frozen at -20°C or colder. Avoid repeated freeze-thaw cycles.