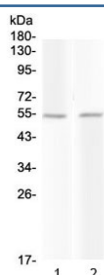


## PROC Antibody / Protein C (RQ4412)

Catalog No.	Formulation	Size
RQ4412	0.5mg/ml if reconstituted with 0.2ml sterile DI water	100 ug

**Bulk quote request**

<b>Availability</b>	1-3 business days
<b>Species Reactivity</b>	Human, Mouse, Rat
<b>Format</b>	Antigen affinity purified
<b>Host</b>	Rabbit
<b>Clonality</b>	Polyclonal (rabbit origin)
<b>Isotype</b>	Rabbit IgG
<b>Purity</b>	Antigen affinity purified
<b>Buffer</b>	Lyophilized from 1X PBS with 2% Trehalose and 0.025% sodium azide
<b>UniProt</b>	P04070
<b>Applications</b>	Western Blot : 0.5-1ug/ml ELISA : 0.1-0.5ug/ml
<b>Limitations</b>	This PROC antibody is available for research use only.



Western blot testing of 1) rat liver and 2) mouse liver with PROC antibody at 0.5ug/ml.  
Predicted molecular weight ~52 kDa.

## Description

Protein C (PROC), also called PC, is a zymogenic (inactive) protein, the activated form of which plays an important role in regulating blood clotting, inflammation, cell death and maintaining the permeability of blood vessel walls in humans and other animals. The PROC gene is mapped on 2q14.3. This gene encodes a vitamin K-dependent plasma glycoprotein. The encoded protein is cleaved to its activated form by the thrombin-thrombomodulin complex. This activated form contains a serine protease domain and functions in degradation of the activated forms of coagulation factors V and VIII. Mutations in this gene have been associated with thrombophilia due to protein C deficiency, neonatal purpura fulminans,

and recurrent venous thrombosis.

## **Application Notes**

Optimal dilution of the PROC antibody should be determined by the researcher.

## **Immunogen**

A human partial recombinant protein corresponding to amino acids D200-P461 was used as the immunogen for the PROC antibody.

## **Storage**

After reconstitution, the PROC antibody can be stored for up to one month at 4°C. For long-term, aliquot and store at -20°C. Avoid repeated freezing and thawing.