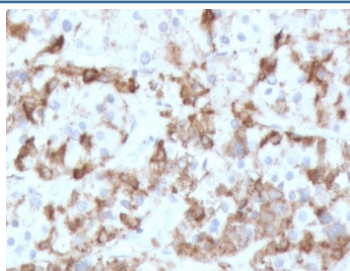


PRL Antibody / Prolactin [clone PLCN-1] (V7606)

Catalog No.	Formulation	Size
V7606-100UG	0.2 mg/ml in 1X PBS with 0.1 mg/ml BSA (US sourced) and 0.05% sodium azide	100 ug
V7606-20UG	0.2 mg/ml in 1X PBS with 0.1 mg/ml BSA (US sourced) and 0.05% sodium azide	20 ug
V7606SAF-100UG	1 mg/ml in 1X PBS; BSA free, sodium azide free	100 ug
V7606IHC-7ML	Prediluted in 1X PBS with 0.1 mg/ml BSA (US sourced) and 0.05% sodium azide; *For IHC use only*	7 ml

[Bulk quote request](#)

Availability	1-3 business days
Species Reactivity	Human
Format	Purified
Host	Mouse
Clonality	Monoclonal (mouse origin)
Isotype	Mouse IgG1, kappa
Clone Name	PLCN-1
Purity	Protein G affinity chromatography
UniProt	P01236
Applications	Immunohistochemistry (FFPE) : 1-2ug/ml for 30 min at RT Prediluted IHC Only Format : incubate for 30 min at RT (1)
Limitations	This PRL antibody is available for research use only.



IHC testing of FFPE human pituitary tissue with PRL antibody (clone PLCN-1). Required HIER: boil tissue sections in pH 9 10mM Tris with 1mM EDTA for 10-20 min followed by cooling at RT for 20 min.

Description

The PRL gene encodes the anterior pituitary hormone prolactin. This secreted hormone is a growth regulator for many tissues, including cells of the immune system. It may also play a role in cell survival by suppressing apoptosis, and it is essential for lactation. [RefSeq]

Application Notes

Optimal dilution of the PRL antibody should be determined by the researcher.

1. The prediluted format is supplied in a dropper bottle and is optimized for use in IHC. After epitope retrieval step (if required), drip mAb solution onto the tissue section and incubate at RT for 30 min.

Immunogen

A recombinant human partial protein corresponding to amino acids 63-201 was used as the immunogen for the PRL antibody.

Storage

Store the PRL antibody at 2-8°C (with azide) or aliquot and store at -20°C or colder (without azide).