

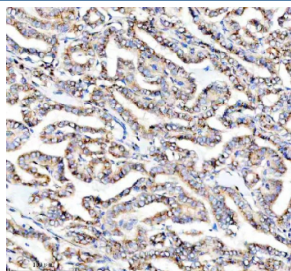
## PRKCH Antibody / PKC eta [clone ADAH-16] (RQ8895)

Catalog No.	Formulation	Size
RQ8895	Antibody in PBS with 0.02% sodium azide, 50% glycerol and 0.4-0.5mg/ml BSA	100 ul

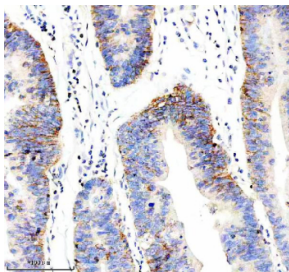
Recombinant **RABBIT MONOCLONAL**

[Bulk quote request](#)

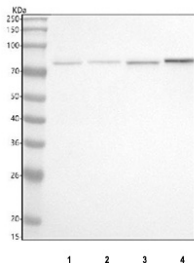
Availability	1-3 days
Species Reactivity	Human
Format	Purified
Host	Rabbit
Clonality	Recombinant Rabbit Monoclonal
Isotype	Rabbit IgG
Clone Name	ADAH-16
Purity	Affinity chromatography
UniProt	P24723
Localization	Cytoplasm
Applications	Western Blot : 1:500 Immunohistochemistry (FFPE) : 1:50
Limitations	This PRKCH antibody is available for research use only.



IHC staining of FFPE human thyroid cancer tissue with PRKCH antibody, HRP-secondary and DAB substrate. HIER: boil tissue sections in pH8 EDTA for 20 min and allow to cool before testing.



IHC staining of FFPE human stomach cancer tissue with PRKCH antibody, HRP-secondary and DAB substrate. HIER: boil tissue sections in pH8 EDTA for 20 min and allow to cool before testing.



Western blot testing of 1) human RT4, 2) rat brain, 3) rat lung and 4) mouse lung tissue lysate with PRKCH antibody. Predicted molecular weight ~78 kDa.

## Description

Protein kinase C eta (PRKCH) is a member of the novel PKC subfamily of serine/threonine kinases, activated by diacylglycerol but independent of calcium. PRKCH plays important roles in regulating cell proliferation, differentiation, and survival, with notable expression in tissues such as skin, lung, and heart.

PRKCH is involved in pathways controlling keratinocyte differentiation, epithelial cell growth, and stress response. Abnormal PRKCH activity has been linked to cancers, cardiovascular disease, and inflammatory disorders. Research on PRKCH function helps advance understanding of tissue-specific signaling mechanisms and disease pathogenesis.

Using a high-quality PRKCH antibody allows for accurate detection in applications such as western blot, immunohistochemistry, and immunoprecipitation. A PRKCH antibody from NSJ Bioreagents delivers sensitivity and reproducibility for studies involving signaling pathways, cancer biology, and cell differentiation. Selecting the right PRKCH antibody is crucial for generating consistent and reliable research outcomes.

## Application Notes

Optimal dilution of the PRKCH antibody should be determined by the researcher.

## Immunogen

A peptide sequence specific to Protein kinase C eta was used as the immunogen for the PRKCH antibody.

## Storage

After reconstitution, the PRKCH antibody can be stored for up to one month at 4°C. For long-term, aliquot and store at -20°C. Avoid repeated freezing and thawing.

