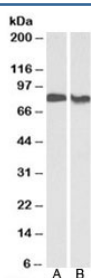


PRKCB Antibody (R33495)

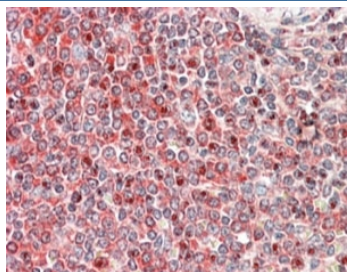
Catalog No.	Formulation	Size
R33495-100UG	0.5 mg/ml in 1X TBS, pH7.3, with 0.5% BSA (US sourced) and 0.02% sodium azide	100 ug

[Bulk quote request](#)

Availability	1-3 business days
Species Reactivity	Human, Rat
Predicted Reactivity	Dog
Format	Antigen affinity purified
Host	Goat
Clonality	Polyclonal (goat origin)
Isotype	Goat Ig
Purity	Antigen affinity
UniProt	P05771
Gene ID	5579
Applications	Western Blot : 0.1-0.3ug/ml Immunohistochemistry (FFPE) : 1-2ug/ml ELISA (peptide) LOD : 1:128000
Limitations	This PRKCB antibody is available for research use only.



Western blot testing of human placenta [A] and rat brain [B] lysates with PRKCB antibody at 0.3ug/ml. Predicted molecular weight: ~77 kDa.



IHC staining of FFPE human spleen with PRKCB antibody at 5ug/ml. HIER: steamed with pH6 citrate buffer, AP-staining.

Description

Additional name(s) for this target protein: Protein kinase C, beta

Application Notes

Optimal dilution of the PRKCB antibody should be determined by the researcher.

1. This PRKCB antibody is specific for isoform 1 of the protein.

Immunogen

Amino acids DKEFTRQPVELT were used as the immunogen for this PRKCB antibody.

Storage

Aliquot and store the PRKCB antibody at -20oC.