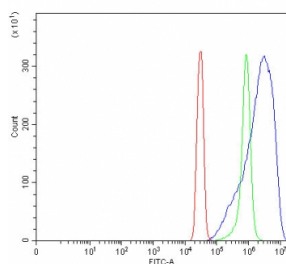


## PRKCA Antibody / PKC Alpha (RQ8049)

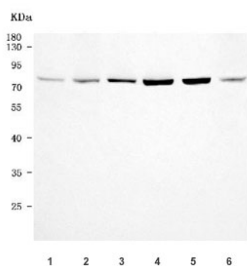
Catalog No.	Formulation	Size
RQ8049	0.5mg/ml if reconstituted with 0.2ml sterile DI water	100 ug

**Bulk quote request**

<b>Availability</b>	1-3 business days
<b>Species Reactivity</b>	Human, Mouse, Rat
<b>Format</b>	Antigen affinity purified
<b>Clonality</b>	Polyclonal (rabbit origin)
<b>Isotype</b>	Rabbit IgG
<b>Purity</b>	Antigen affinity purified
<b>Buffer</b>	Lyophilized from 1X PBS with 2% Trehalose
<b>UniProt</b>	P17252
<b>Applications</b>	Western Blot : 0.5-1ug/ml Flow Cytometry : 1-3ug/million cells Direct ELISA : 0.1-0.5ug/ml
<b>Limitations</b>	This PRKCA antibody is available for research use only.



Flow cytometry testing of fixed and permeabilized human SiHa cells with PRKCA antibody at 1ug/million cells (blocked with goat sera); Red=cells alone, Green=isotype control, Blue= PRKCA antibody.



Western blot testing of 1) Jurkat, 2) human 293T, 3) human HeLa, 4) human K562, 5) rat C6 and 6) mouse NIH 3T3 cell lysate with PRKCA antibody. Predicted molecular weight ~77 kDa.

## Description

Protein kinase C (PKC) is the major phorbol ester receptor. Activation of PKC by calcium ions and the second messenger diacylglycerol is thought to play a central role in the induction of cellular responses to a variety of ligand-receptor systems and in the regulation of cellular responsiveness to external stimuli. Three of these, termed alpha, beta and gamma, are highly homologous. PRKCA1 is mapped to 17q22-q23.2. PRKCA1 regulates cardiac contractility and propensity toward heart failure.

## Application Notes

Optimal dilution of the PRKCA antibody should be determined by the researcher.

## Immunogen

E. coli-derived recombinant human protein (amino acids Q142-V672) was used as the immunogen for the PRKCA antibody.

## Storage

After reconstitution, the PRKCA antibody can be stored for up to one month at 4°C. For long-term, aliquot and store at -20°C. Avoid repeated freezing and thawing.