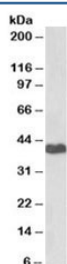


PRKACA Antibody (R36411)

| Catalog No. | Formulation | Size |
|--------------|---|--------|
| R36411-100UG | 0.5 mg/ml in 1X TBS, pH7.3, with 0.5% BSA (US sourced) and 0.02% sodium azide | 100 ug |

[Bulk quote request](#)

| | |
|--------------------|--|
| Availability | 1-3 business days |
| Species Reactivity | Human |
| Format | Antigen affinity purified |
| Host | Goat |
| Clonality | Polyclonal (goat origin) |
| Isotype | Goat Ig |
| Purity | Antigen affinity |
| Gene ID | 5566 |
| Applications | Western Blot : 1-3ug/ml (1) ELISA (peptide) LOD : 1:64000 |
| Limitations | This PRKACA antibody is available for research use only. |



Western blot testing of human HeLa cell lysate with PRKACA antibody at 2ug/ml.
Predicted molecular weight of isoforms: 38~47kDa.

Description

Additional name(s) for this target protein: PKACA; Protein kinase, cAMP-dependent, catalytic, alpha

Application Notes

Optimal dilution of the PRKACA antibody should be determined by the researcher.

1. Isoforms 1 (351 AA), 2 (343 AA) and 3 (427 AA) may be detected by this Ab.

Immunogen

Amino acids KHKETGNHYAMK were used as the immunogen for this PRKACA antibody. This sequence is common to isoforms 1-3.

Storage

Aliquot and store the PRKACA antibody at -20oC.