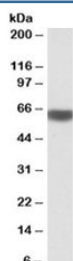


## PRKAA2 Antibody (R33301)

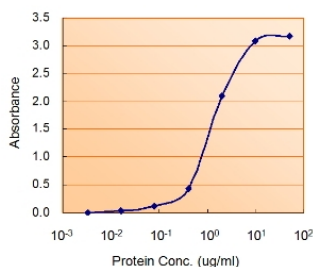
| Catalog No.  | Formulation   | Size   |
|--------------|---|--------|
| R33301-100UG | 0.5 mg/ml in 1X TBS, pH7.3, with 0.5% BSA (US sourced) and 0.02% sodium azide | 100 ug |

[Bulk quote request](#)

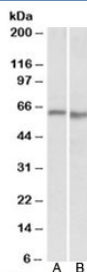
|                      |  |
|----------------------|--|
| Availability         | 1-3 business days  |
| Species Reactivity   | Human, Mouse, Rat  |
| Predicted Reactivity | Cow, Dog, Pig  |
| Format               | Antigen affinity purified  |
| Host                 | Goat   |
| Clonality            | Polyclonal (goat origin)   |
| Isotype              | Goat Ig  |
| Purity               | Antigen affinity   |
| Gene ID              | 5563   |
| Applications         | Western Blot : 0.3-1ug/ml<br>Enzyme ImmunoAssay : binds recombinant protein (use at 1.5-3ug/ml)<br>ELISA (peptide) LOD : 1:16000 |
| Limitations          | This PRKAA2 antibody is available for research use only.   |



Western blot testing of human liver lysate with PRKAA2 antibody at 1ug/ml. Predicted molecular weight: ~62kDa.



Sandwich ELISA with the PRKAA2 antibody used as detect at 1.5ug/ml.



Western blot of mouse (A) and rat (B) heart lysate with PRKAA2 antibody at 0.3ug/ml.  
Predicted molecular weight: ~62kDa.

## Description

Additional name(s) for this target protein: Protein kinase, AMP-activated, alpha 2 catalytic subunit

## Application Notes

Optimal dilution of the PRKAA2 antibody should be determined by the researcher.

## Immunogen

Amino acids CPLDALNTTKP were used as the immunogen for this PRKAA2 antibody.

## Storage

Aliquot and store the PRKAA2 antibody at -20oC.