

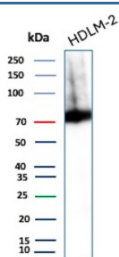
PRF1 Antibody / Perforin 1 [clone PRF1/9681R] (V5975)

Catalog No.	Formulation	Size
V5975-100UG	0.2 mg/ml in 1X PBS with 0.05% BSA, 0.05% sodium azide	100 ug
V5975-20UG	0.2 mg/ml in 1X PBS with 0.05% BSA, 0.05% sodium azide	20 ug
V5975SAF-100UG	1 mg/ml in 1X PBS; BSA free, sodium azide free	100 ug

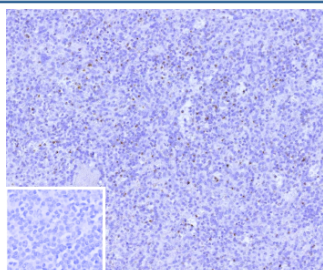
Recombinant **RABBIT MONOCLONAL**

[Bulk quote request](#)

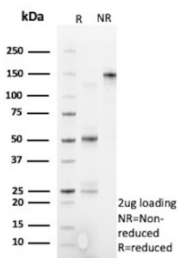
Species Reactivity	Human
Format	Purified
Host	Rabbit
Clonality	Recombinant Rabbit Monoclonal
Isotype	Rabbit IgG, kappa
Clone Name	PRF1/9681R
UniProt	P14222
Localization	Cell membrane, Cytolytic granule, Endosome lumen, Secreted
Applications	Immunohistochemistry (FFPE) : 1-2ug/ml Western Blot : 2-4ug/ml
Limitations	This PRF1/Perforin 1 antibody is available for research use only.



Western blot analysis of HDLM-2 cell lysate using Perforin-1 Recombinant Rabbit Monoclonal Antibody (PRF1/9681R).



Formalin-fixed, paraffin-embedded human spleen stained with Perforin-1 Recombinant Rabbit Monoclonal Antibody (PRF1/9681R). Inset: PBS instead of primary antibody; secondary only negative control.



SDS-PAGE Analysis of Purified Perforin-1 Recombinant Rabbit Monoclonal Antibody (PRF1/9681R). Confirmation of Purity and Integrity of Antibody.

Application Notes

1. Optimal dilution of the PRF1/Perforin 1 antibody should be determined by the researcher.
2. This PRF1/Perforin 1 antibody is recombinantly produced by expression in CHO cells.

Immunogen

A recombinant fragment (around amino acids 400-555) of human Perforin-1 protein (exact sequence is proprietary) was used as the immunogen for the PRF1/Perforin 1 antibody.

Storage

PRF1/Perforin 1 antibody with sodium azide - store at 2 to 8°C; antibody without sodium azide - store at -20 to -80°C.