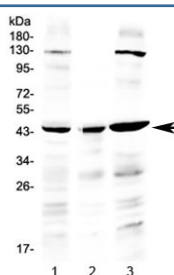


PREB Antibody / Prolactin regulatory element-binding protein (R32963)

| Catalog No. | Formulation | Size |
|-------------|---|--------|
| R32963 | 0.5mg/ml if reconstituted with 0.2ml sterile DI water | 100 ug |

Bulk quote request

| | |
|---------------------------|--|
| Availability | 1-3 business days |
| Species Reactivity | Human |
| Format | Antigen affinity purified |
| Host | Rabbit |
| Clonality | Polyclonal (rabbit origin) |
| Isotype | Rabbit IgG |
| Purity | Antigen affinity |
| Buffer | Lyophilized from 1X PBS with 2.5% BSA, 0.025% sodium azide |
| UniProt | Q9HCU5 |
| Applications | Western Blot : 0.5-1ug/ml |
| Limitations | This PREB antibody is available for research use only. |



Western blot testing of human 1) HeLa, 2) placenta and 3) A549 lysate with PREB antibody at 0.5ug/ml. Predicted molecular weight ~45 kDa.

Description

Prolactin regulatory element-binding protein is a protein that in humans is encoded by the PREB gene. This gene encodes a protein that specifically binds to a Pit1-binding element of the prolactin (PRL) promoter. This protein may act as a transcriptional regulator and is thought to be involved in some of the developmental abnormalities observed in patients with partial trisomy 2p. This gene overlaps the abhydrolase domain containing 1 (ABHD1) gene on the opposite strand.

Application Notes

Optimal dilution of the PREB antibody should be determined by the researcher.

Immunogen

A recombinant human protein corresponding to amino acids K42-N236 was used as the immunogen for the PREB antibody.

Storage

After reconstitution, the PREB antibody can be stored for up to one month at 4oC. For long-term, aliquot and store at -20oC. Avoid repeated freezing and thawing.