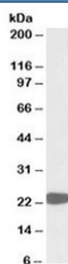


PRDX1 Antibody (R35859)

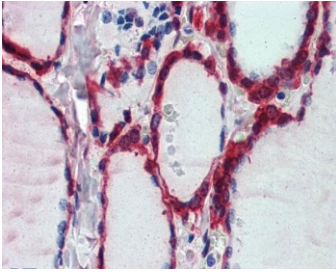
Catalog No.	Formulation	Size
R35859-100UG	0.5 mg/ml in 1X TBS, pH7.3, with 0.5% BSA (US sourced) and 0.02% sodium azide	100 ug

[Bulk quote request](#)

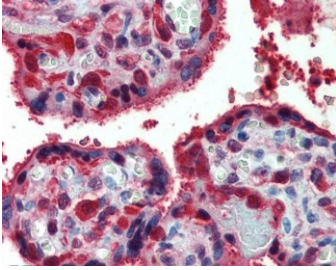
Availability	1-3 business days
Species Reactivity	Human
Predicted Reactivity	Mouse, Rat, Dog, Pig, Cow
Format	Antigen affinity purified
Host	Goat
Clonality	Polyclonal (goat origin)
Isotype	Goat Ig
Purity	Antigen affinity
Gene ID	5052
Localization	Cytoplasmic
Applications	Western Blot : 0.01-0.03ug/ml IHC (FFPE) : 2.5ug/ml ELISA (peptide) LOD : 1:32000
Limitations	This PRDX1 antibody is available for research use only.



Western blot testing of HepG2 lysate with PRDX1 antibody at 0.01ug/ml. Predicted molecular weight: 22 kDa.



IHC testing of FFPE human thyroid gland tissue with PRDX1 antibody at 2.5ug/ml. Required HIER: steamed antigen retrieval with pH6 citrate buffer; AP-staining.



IHC testing of FFPE human placental tissue with PRDX1 antibody at 2.5ug/ml. Required HIER: steamed antigen retrieval with pH6 citrate buffer; AP-staining.

Description

Additional name(s) for this target protein: Peroxiredoxin 1

Application Notes

Optimal dilution of the PRDX1 antibody should be determined by the researcher.

Immunogen

Amino acids SDPKRTIAQDYG were used as the immunogen for this PRDX1 antibody.

Storage

Aliquot and store the PRDX1 antibody at -20oC.