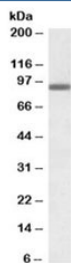


## PRDM1 Antibody / BLIMP1 (R33488)

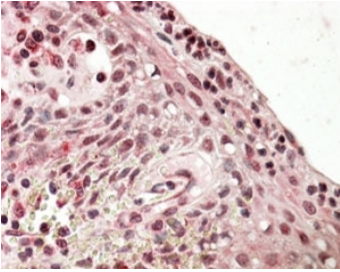
Catalog No.	Formulation	Size
R33488-100UG	0.5 mg/ml in 1X TBS, pH7.3, with 0.5% BSA (US sourced) and 0.02% sodium azide	100 ug

[Bulk quote request](#)

<b>Availability</b>	1-3 business days
<b>Species Reactivity</b>	Human
<b>Predicted Reactivity</b>	Mouse, Rat, Dog, Pig, Cow
<b>Format</b>	Antigen affinity purified
<b>Host</b>	Goat
<b>Clonality</b>	Polyclonal (goat origin)
<b>Isotype</b>	Goat Ig
<b>Purity</b>	Antigen affinity
<b>Gene ID</b>	639
<b>Applications</b>	Western Blot : 0.5-1.5ug/ml Immunohistochemistry (FFPE) : suitable ELISA (peptide) LOD : 1:1000
<b>Limitations</b>	This PRDM1 antibody is available for research use only.



Western blot testing of A431 lysate with PRDM1 antibody at 0.3ug/ml. Predicted molecular weight: ~92/77kDa (isoforms 1/2).



IHC staining of FFPE human tonsil with PRDM1 antibody at 4ug/ml. HIER: steamed with pH6 citrate buffer, AP-staining.

## Description

Additional name(s) for this target protein: PR domain containing 1; B Lymphocyte Induced Maturation Protein 1

## Application Notes

Optimal dilution of the PRDM1 antibody should be determined by the researcher.

## Immunogen

Amino acids DISDNADRLEDVED were used as the immunogen for this PRDM1 antibody.

## Storage

Aliquot and store the PRDM1 antibody at -20oC.