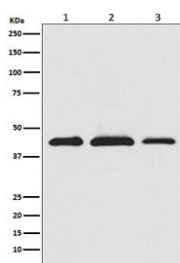


PRAS40 Antibody / AKT1S1 [clone ACHD-1] (RQ5491)

Catalog No.	Formulation	Size
RQ5491	Antibody in PBS with 0.02% sodium azide, 50% glycerol and 0.4-0.5mg/ml BSA	100 ul

[Bulk quote request](#)

Availability	1-2 weeks
Species Reactivity	Human, Mouse, Rat
Format	Purified
Host	Rabbit
Clonality	Rabbit Monoclonal
Isotype	Rabbit IgG
Clone Name	ACHD-1
Purity	Affinity purified
UniProt	Q96B36
Applications	Western Blot : 1:500-1:2000
Limitations	This PRAS40 antibody is available for research use only.



Western blot testing of 1) human HeLa, 2) mouse RAW 264.7 and 3) rat PC-12 cell lysate with PRAS40 antibody. Expected molecular weight ~40 kDa.

Description

PRAS40/AKT1S1 is a substrate for AKT1 phosphorylation, but can also be activated by AKT1-independent mechanisms. It may also play a role in nerve growth factor-mediated neuroprotection. [UniProt]

Application Notes

Optimal dilution of the PRAS40 antibody should be determined by the researcher.

Immunogen

A synthetic peptide specific to human AKT1S1 / PRAS40 was used as the immunogen for the PRAS40 antibody.

Storage

Store the PRAS40 antibody at -20oC.