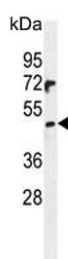


PRAMEF6 Antibody (F54597)

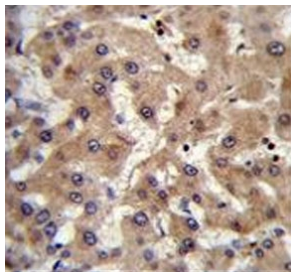
Catalog No.	Formulation	Size
F54597-0.4ML	In 1X PBS, pH 7.4, with 0.09% sodium azide	0.4 ml
F54597-0.08ML	In 1X PBS, pH 7.4, with 0.09% sodium azide	0.08 ml

[Bulk quote request](#)

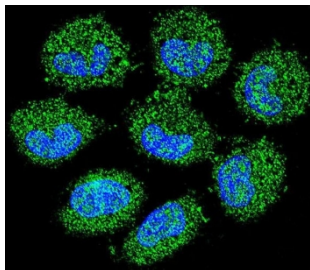
Availability	1-3 business days
Species Reactivity	Human
Format	Purified
Host	Rabbit
Clonality	Polyclonal (rabbit origin)
Isotype	Rabbit Ig
Purity	Antigen affinity purified
UniProt	Q5VXH4
Localization	Cytoplasmic
Applications	Western Blot : 1:500-1:2000 Immunohistochemistry (FFPE) : 1:25 Immunofluorescence : 1:25 Flow Cytometry : 1:25 (1x10 ⁶ cells)
Limitations	This PRAMEF6 antibody is available for research use only.



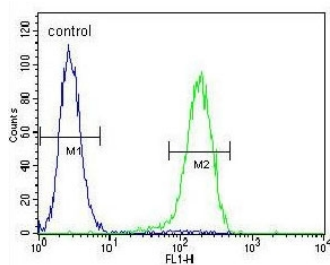
Western blot testing of human NCI-H460 cell lysate with PRAMEF6 antibody. Predicted molecular weight ~55 kDa.



IHC testing of FFPE human liver tissue with PRAMEF6 antibody. HIER: steam section in pH6 citrate buffer for 20 min and allow to cool prior to staining.



Immunofluorescent staining of human NCI-H460 cells with Cytokeratin 18 antibody (green) and DAPI nuclear stain (blue).



Flow cytometry testing of human NCI-H460 cells with PRAMEF6 antibody; Blue=isotype control, Green= PRAMEF6 antibody.

Description

Alternate names: PRAME family member 6

Application Notes

The stated application concentrations are suggested starting points. Titration of the PRAMEF6 antibody may be required due to differences in protocols and secondary/substrate sensitivity.

Immunogen

A portion of amino acids 395-423 from the human protein was used as the immunogen for the PRAMEF6 antibody.

Storage

Aliquot the PRAMEF6 antibody and store frozen at -20oC or colder. Avoid repeated freeze-thaw cycles.