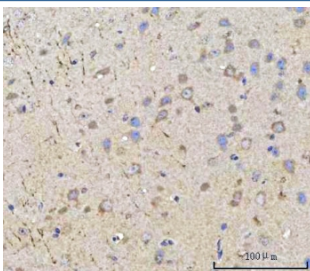


## PPWD1 Antibody / Peptidylprolyl isomerase domain and WD repeat-containing protein 1 (RQ8202)

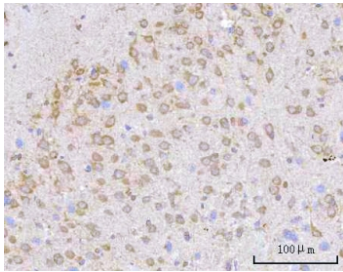
Catalog No.	Formulation	Size
RQ8202	0.5mg/ml if reconstituted with 0.2ml sterile DI water	100 ug

[Bulk quote request](#)

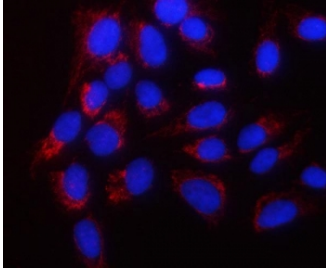
<b>Availability</b>	1-3 business days
<b>Species Reactivity</b>	Human, Mouse, Rat
<b>Format</b>	Antigen affinity purified
<b>Host</b>	Rabbit
<b>Clonality</b>	Polyclonal (rabbit origin)
<b>Isotype</b>	Rabbit IgG
<b>Purity</b>	Antigen affinity purified
<b>Buffer</b>	Lyophilized from 1X PBS with 2% Trehalose
<b>UniProt</b>	Q96BP3
<b>Applications</b>	Western Blot : 0.5-1ug/ml Immunohistochemistry (FFPE) : 2-5ug/ml Immunofluorescence : 5ug/ml Flow Cytometry : 1-3ug/million cells Direct ELISA : 0.1-0.5ug/ml
<b>Limitations</b>	This PPWD1 antibody is available for research use only.



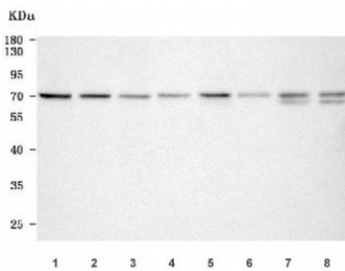
IHC staining of FFPE mouse brain tissue with PPWD1 antibody. HIER: boil tissue sections in pH8 EDTA for 20 min and allow to cool before testing.



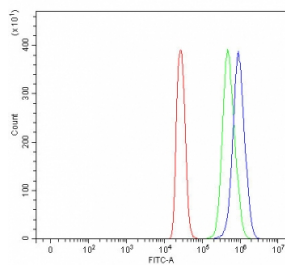
IHC staining of FFPE rat brain tissue with PPWD1 antibody. HIER: boil tissue sections in pH8 EDTA for 20 min and allow to cool before testing.



Immunofluorescent staining of FFPE human U-2 OS cells with PPWD1 antibody (red) and DAPI nuclear stain (blue). HIER: steam section in pH6 citrate buffer for 20 min.



Western blot testing of 1) human 293T, 2) human HeLa, 3) human Jurkat, 4) rat brain, 5) rat kidney, 6) mouse brain, 7) mouse kidney and 8) mouse SP2/0 cell lysate with PPWD1 antibody. Predicted molecular weight ~74 kDa.



Flow cytometry testing of fixed and permeabilized human 293T cells with PPWD1 antibody at 1ug/million cells (blocked with goat sera); Red=cells alone, Green=isotype control, Blue= PPWD1 antibody.

## Description

Putative peptidylprolyl isomerase (PPIase). PPIases accelerate the folding of proteins. It catalyzes the cis-trans isomerization of proline imidic peptide bonds in oligopeptides. May be involved in pre-mRNA splicing.

## Application Notes

Optimal dilution of the PPWD1 antibody should be determined by the researcher.

## Immunogen

E. coli-derived recombinant human protein (amino acids D188-N529) was used as the immunogen for the PPWD1 antibody.

## Storage

After reconstitution, the PPWD1 antibody can be stored for up to one month at 4oC. For long-term, aliquot and store at -20oC. Avoid repeated freezing and thawing.

