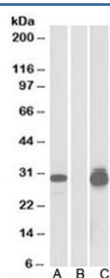


## PPPDE1 Antibody (R33862)

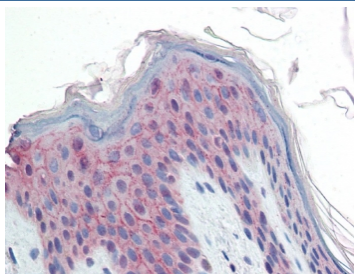
Catalog No.	Formulation	Size
R33862-100UG	0.5 mg/ml in 1X TBS, pH7.3, with 0.5% BSA (US sourced) and 0.02% sodium azide	100 ug

[Bulk quote request](#)

Availability	1-3 business days
Species Reactivity	Human
Predicted Reactivity	Mouse, Rat, Dog, Pig, Cow
Format	Antigen affinity purified
Host	Goat
Clonality	Polyclonal (goat origin)
Isotype	Goat Ig
Purity	Antigen affinity
Gene ID	51029
Localization	Cytoplasmic
Applications	Western Blot : 0.5-2ug/ml IHC (FFPE) : 10ug/ml ELISA (peptide) LOD : 1:32000
Limitations	This PPPDE1 antibody is available for research use only.



Western blot testing of HEK293 lysate overexpressing human PPPDE1-MYC probed with PPPDE1 antibody (0.5ug/ml) in Lane A and anti-MYC (1/5000) in lane C. Mock-transfected HEK293 probed with PPPDE1 antibody (1ug/ml) in Lane B.



IHC testing of FFPE human skin with PPPDE1 antibody at 10ug/ml. Required HIER: steamed antigen retrieval with pH6 citrate buffer; AP-staining.

## Description

Additional name(s) for this target protein: PPPDE peptidase domain containing 1; PNAS4

## Application Notes

Optimal dilution of the PPPDE1 antibody should be determined by the researcher.

## Immunogen

Amino acids ELGKEYKGNAYH were used as the immunogen for this PPPDE1 antibody.

## Storage

Aliquot and store the PPPDE1 antibody at -20oC.