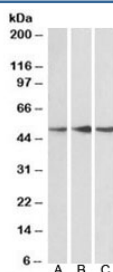


PPP2R5E Antibody (R34725)

Catalog No.	Formulation	Size
R34725-100UG	0.5 mg/ml in 1X TBS, pH7.3, with 0.5% BSA (US sourced) and 0.02% sodium azide	100 ug

[Bulk quote request](#)

Availability	1-3 business days
Species Reactivity	Human, Mouse, Rat
Predicted Reactivity	Cow, Dog
Format	Antigen affinity purified
Host	Goat
Clonality	Polyclonal (goat origin)
Isotype	Goat Ig
Purity	Antigen affinity
Gene ID	5529
Applications	Western Blot : 0.1-0.3ug/ml ELISA (peptide) LOD : 1:32000
Limitations	This PPP2R5E antibody is available for research use only.



Western blot testing of human cerebellum [A], mouse [B] and rat [C] brain lysate with PPP2R5E antibody at 0.1ug/ml. Predicted molecular weight: 50~56kDa.

Description

Additional name(s) for this target protein: Protein phosphatase 2, regulatory subunit B (B56), epsilon, PP2a beta

Application Notes

Optimal dilution of the PPP2R5E antibody should be determined by the researcher.

Immunogen

Amino acids LKRGLRRDGIPT were used as the immunogen for this PPP2R5E antibody.

Storage

Aliquot and store the PPP2R5E antibody at -20oC.