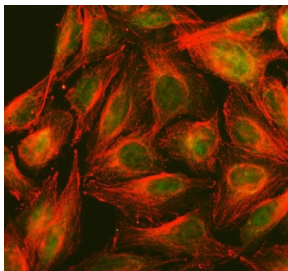


PPP2R5D Antibody (RQ8110)

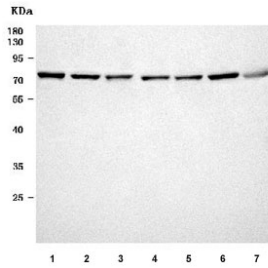
Catalog No.	Formulation	Size
RQ8110	0.5mg/ml if reconstituted with 0.2ml sterile DI water	100 ug

Bulk quote request

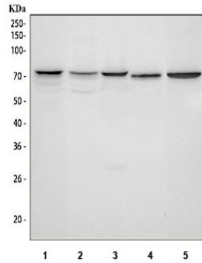
Availability	1-3 business days
Species Reactivity	Human, Mouse, Rat
Format	Antigen affinity purified
Host	Rabbit
Clonality	Polyclonal (rabbit origin)
Isotype	Rabbit IgG
Purity	Antigen affinity purified
Buffer	Lyophilized from 1X PBS with 2% Trehalose
UniProt	Q14738
Localization	Nuclear, cytoplasmic
Applications	Western Blot : 0.5-1ug/ml Flow Cytometry : 1-3ug/million cells Immunofluorescence : 5ug/ml Immunoprecipitation : 2ug antibody/500ug lysate Immunohistochemistry (FFPE) : 2-5ug/ml Direct ELISA : 0.1-0.5ug/ml
Limitations	This PPP2R5D antibody is available for research use only.



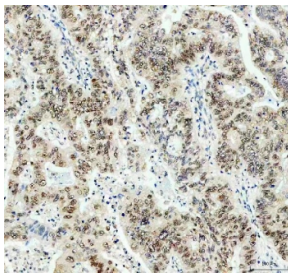
Immunofluorescent staining of FFPE human U-2 OS cells with PPP2R5D antibody (green) and Alpha Tubulin mAb (red). HIER: steam section in pH6 citrate buffer for 20 min.



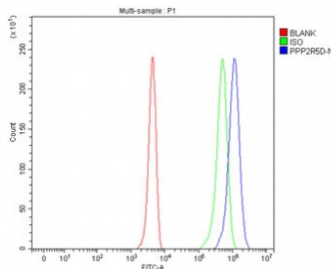
Western blot testing of 1) human HeLa, 2) human MCF7, 3) human HepG2, 4) rat brain, 5) rat PC-12, 6) mouse brain and 7) mouse Neuro-2a cell lysate with PPP2R5D antibody. Predicted molecular weight ~58 kDa, ~66 kDa and ~70 kDa (multiple isoforms).



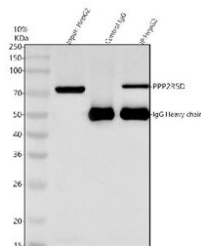
Western blot testing of 1) human HepG2, 2) human 293T, 3) human Jurkat, 4) rat brain and 5) mouse brain lysate with PPP2R5D antibody. Predicted molecular weight ~58 kDa, ~66 kDa and ~70 kDa (multiple isoforms).



IHC staining of FFPE human stomach cancer tissue with PPP2R5D antibody. HIER: boil tissue sections in pH8 EDTA for 20 min and allow to cool before testing.



Flow cytometry testing of fixed and permeabilized human 293T cells with PPP2R5D antibody at 1ug/million cells (blocked with goat sera); Red=cells alone, Green=isotype control, Blue= PPP2R5D antibody.



Immunoprecipitation of PPP2R5D protein from 500ug of human HepG2 whole cell lysate with 2ug of PPP2R5D antibody.

Description

Serine/threonine-protein phosphatase 2A 56 kDa regulatory subunit delta isoform is an enzyme that in humans is encoded by the PPP2R5D gene. The product of this gene belongs to the phosphatase 2A regulatory subunit B family. Protein phosphatase 2A is one of the four major Ser/Thr phosphatases, and it is implicated in the negative control of cell growth and division. It consists of a common heteromeric core enzyme, which is composed of a catalytic subunit and a constant regulatory subunit, that associates with a variety of regulatory subunits. The B regulatory subunit might modulate substrate selectivity and catalytic activity. This gene encodes a delta isoform of the regulatory subunit B56 subfamily. Alternatively spliced transcript variants encoding different isoforms have been identified.

Application Notes

Optimal dilution of the PPP2R5D antibody should be determined by the researcher.

Immunogen

E. coli-derived recombinant human protein (amino acids R91-L602) was used as the immunogen for the PPP2R5D antibody.

Storage

After reconstitution, the PPP2R5D antibody can be stored for up to one month at 4oC. For long-term, aliquot and store at -20oC. Avoid repeated freezing and thawing.