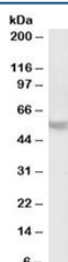


PPP2R5B Antibody (R35434)

Catalog No.	Formulation	Size
R35434-100UG	0.5 mg/ml in 1X TBS, pH7.3, with 0.5% BSA (US sourced) and 0.02% sodium azide	100 ug

[Bulk quote request](#)

Availability	1-3 business days
Species Reactivity	Human
Format	Antigen affinity purified
Host	Goat
Clonality	Polyclonal (goat origin)
Isotype	Goat Ig
Purity	Antigen affinity
Gene ID	5526
Applications	Western Blot : 2-3ug/ml ELISA (peptide) LOD : 1:2000
Limitations	This PPP2R5B antibody is available for research use only.



Western blot testing of human cerebellum lysate with PPP2R5B antibody at 2ug/ml.
Predicted molecular weight: ~57kDa.

Description

Additional name(s) for this target protein: Protein phosphatase 2 regulatory subunit B (B56) beta isoform; PP2A B subunit isoform R5-beta; Serine/threonine-protein phosphatase 2A 56 kDa regulatory subunit beta isoform

Application Notes

Optimal dilution of the PPP2R5B antibody should be determined by the researcher.

Immunogen

Amino acids QRLTPQVAASGGQS were used as the immunogen for this PPP2R5B antibody.

Storage

Aliquot and store the PPP2R5B antibody at -20oC.