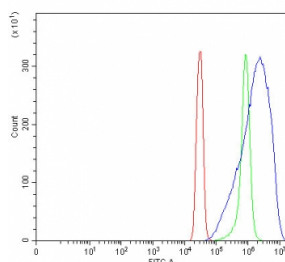


PPP2R5B Antibody / PP2A B subunit isoform R5-beta (RQ8044)

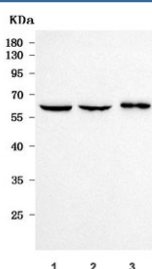
Catalog No.	Formulation	Size
RQ8044	0.5mg/ml if reconstituted with 0.2ml sterile DI water	100 ug

Bulk quote request

Availability	1-3 business days
Species Reactivity	Human
Format	Antigen affinity purified
Clonality	Polyclonal (rabbit origin)
Isotype	Rabbit IgG
Purity	Antigen affinity purified
Buffer	Lyophilized from 1X PBS with 2% Trehalose
UniProt	Q15173
Applications	Western Blot : 0.5-1ug/ml Flow Cytometry : 1-3ug/million cells Direct ELISA : 0.1-0.5ug/ml
Limitations	This PPP2R5B antibody is available for research use only.



Flow cytometry testing of fixed and permeabilized human SiHa cells with PPP2R5B antibody at 1ug/million cells (blocked with goat sera); Red=cells alone, Green=isotype control, Blue= PPP2R5B antibody.



Western blot testing of human 1) PC-3, 2) SiHa and 3) A431 cell lysate with PPP2R5B antibody. Predicted molecular weight ~57 kDa.

Description

Serine/threonine-protein phosphatase 2A 56 kDa regulatory subunit beta isoform is an enzyme that in humans is encoded by the PPP2R5B gene. The product of this gene belongs to the phosphatase 2A regulatory subunit B family. Protein phosphatase 2A is one of the four major Ser/Thr phosphatases, and it is implicated in the negative control of cell growth and division. It consists of a common heteromeric core enzyme, which is composed of a catalytic subunit and a constant regulatory subunit, that associates with a variety of regulatory subunits. The B regulatory subunit might modulate substrate selectivity and catalytic activity. This gene encodes a beta isoform of the regulatory subunit B56 subfamily.

Application Notes

Optimal dilution of the PPP2R5B antibody should be determined by the researcher.

Immunogen

E. coli-derived recombinant human protein (amino acids Q56-A492) was used as the immunogen for the PPP2R5B antibody.

Storage

After reconstitution, the PPP2R5B antibody can be stored for up to one month at 4°C. For long-term, aliquot and store at -20°C. Avoid repeated freezing and thawing.