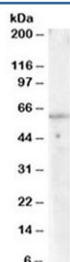


## PPP2R1A Antibody (R34700)

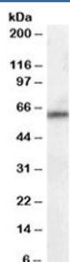
Catalog No.	Formulation	Size
R34700-100UG	0.5 mg/ml in 1X TBS, pH7.3, with 0.5% BSA (US sourced) and 0.02% sodium azide	100 ug

[Bulk quote request](#)

Availability	1-3 business days
Species Reactivity	Human
Predicted Reactivity	Mouse, Rat, Dog, Pig, Cow
Format	Antigen affinity purified
Clonality	Polyclonal (goat origin)
Isotype	Goat Ig
Purity	Antigen affinity
Gene ID	5518
Applications	Western Blot : 0.03-0.1ug/ml ELISA (peptide) LOD : 1:16000
Limitations	This PPP2R1A antibody is available for research use only.



Western blot testing of human lymph node lysate with PPP2R1A antibody at 0.03ug/ml.  
Predicted molecular weight ~65 kDa.



Western blot testing of human thymus lysate with PPP2R1A antibody at 0.1ug/ml.  
Predicted molecular weight ~65 kDa.

## Description

Additional name(s) for this target protein: Protein phosphatase 2, regulatory subunit A

## Application Notes

Optimal dilution of the PPP2R1A antibody should be determined by the researcher.

## Immunogen

Amino acids KYFAQEALTVLSLA were used as the immunogen for this PPP2R1A antibody.

## Storage

Aliquot and store the PPP2R1A antibody at -20oC.