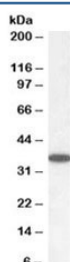


## PPP2CA/B Antibody / PP2A alpha + beta (R33914)

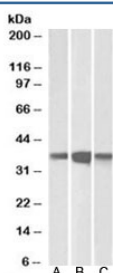
Catalog No.	Formulation	Size
R33914-100UG	0.5 mg/ml in 1X TBS, pH7.3, with 0.5% BSA (US sourced) and 0.02% sodium azide	100 ug

[Bulk quote request](#)

Availability	1-3 business days
Species Reactivity	Human, Mouse, Rat, Pig
Predicted Reactivity	Dog, Cow, Rabbit
Format	Antigen affinity purified
Clonality	Polyclonal (goat origin)
Isotype	Goat Ig
Purity	Antigen affinity
Gene ID	5515; 5516
Applications	Western Blot : 0.05-0.2ug/ml ELISA (peptide) LOD : 1:32000
Limitations	This PPP2CA/B antibody is available for research use only.



Western blot testing of human cerebellum lysate with PPP2CA/B antibody at 0.05ug/ml. Predicted molecular weight: ~36kDa.



Western blot testing of mouse (A), rat (B) and pig (C) brain lysates with PPP2CA/B antibody at 0.1ug/ml. Predicted molecular weight: ~36kDa.

## Description

Additional name(s) for this target protein: Protein phosphatase 2 (formerly 2A), catalytic subunit, alpha/beta; PPP2CA; PPP2CB

## Application Notes

Optimal dilution of the PPP2CA/B antibody should be determined by the researcher.

## Immunogen

Amino acids EPHVTRRTPDYFL were used as the immunogen for this PPP2CA/B antibody.

## Storage

Aliquot and store the PPP2CA/B antibody at -20oC.