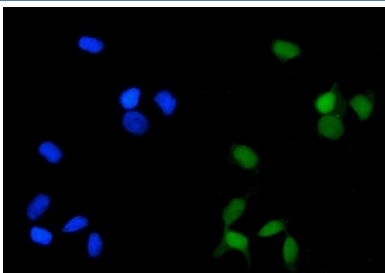


## PPP2CA Antibody / PP2A alpha [clone 3B6] (RQ5853)

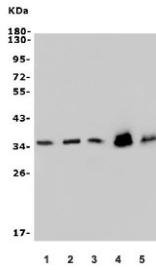
Catalog No.	Formulation	Size
RQ5853	0.5mg/ml if reconstituted with 0.2ml sterile DI water	100 ug

### Bulk quote request

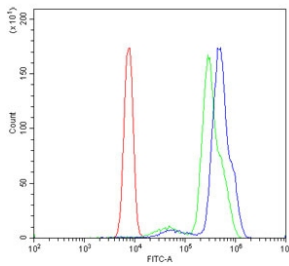
<b>Availability</b>	1-3 business days
<b>Species Reactivity</b>	Human, Mouse, Rat, Monkey
<b>Format</b>	Antigen affinity purified
<b>Host</b>	Mouse
<b>Clonality</b>	Monoclonal (mouse origin)
<b>Isotype</b>	Mouse IgG2a
<b>Clone Name</b>	3B6
<b>Purity</b>	Affinity purified
<b>Buffer</b>	Lyophilized from 1X PBS with 2% Trehalose
<b>UniProt</b>	P67775
<b>Applications</b>	Western Blot : 0.5-1ug/ml Immunohistochemistry : 1-2ug/ml Immunofluorescence : 2-4ug/ml Flow Cytometry : 1-3ug/million cells
<b>Limitations</b>	This PPP2CA antibody is available for research use only.



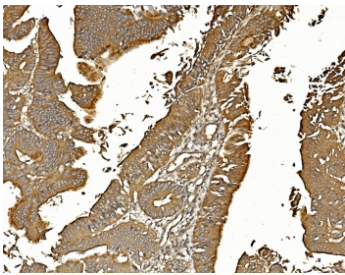
Immunofluorescent staining of FFPE human HeLa cells with PPP2CA antibody (green) and DAPI nuclear stain (blue). HIER: steam section in pH6 citrate buffer for 20 min.



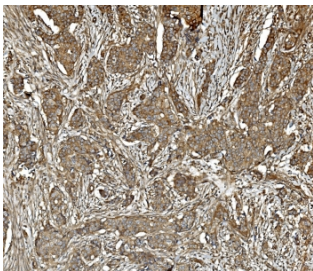
Western blot testing of 1) human HeLa, 2) human HepG2, 3) monkey COS-7, 4) rat PC-12 and 5) mouse NIH 3T3 lysate with PPP2CA antibody. Predicted molecular weight ~35 kDa.



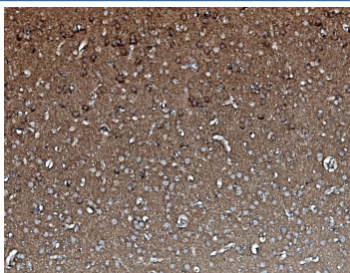
Flow cytometry testing of human U937 cells with PPP2CA antibody at 1ug/million cells (blocked with goat sera); Red=cells alone, Green=isotype control, Blue= PPP2CA antibody.



IHC staining of FFPE human rectal cancer with PPP2CA antibody. HIER: boil tissue sections in pH8 EDTA for 20 min and allow to cool before testing.



IHC staining of FFPE human breast cancer with PPP2CA antibody. HIER: boil tissue sections in pH8 EDTA for 20 min and allow to cool before testing.



IHC staining of FFPE rat brain with PPP2CA antibody. HIER: boil tissue sections in pH8 EDTA for 20 min and allow to cool before testing.

## Description

The catalytic subunit of human protein phosphatase 2A (PPP2CA) encodes a 309-amino acid polypeptide. It is localized to chromosome 5. The gene (approximately 30 kbp) is composed of seven exons and six introns. It is predicted to be important for phosphatase enzymatic activity. Methylation of the C-terminal leucine residue (Leu309) of protein serine/threonine phosphatase 2A catalytic subunit (PP2AC) is known to regulate catalytic activity in vitro. Furthermore, PP2A has a fundamental role in cardiac function, and suggests that disturbances in protein phosphatase expression and activity may cause or exacerbate the course of cardiac diseases.

## Application Notes

Optimal dilution of the PPP2CA antibody should be determined by the researcher.

## **Immunogen**

Recombinant human protein (amino acids M1-L309) was used as the immunogen for the PPP2CA antibody.

## **Storage**

After reconstitution, the PPP2CA antibody can be stored for up to one month at 4oC. For long-term, aliquot and store at -20oC. Avoid repeated freezing and thawing.