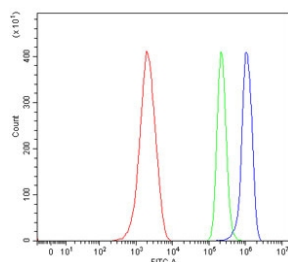


Ppp1r15a Antibody / Gadd34 (RQ7322)

Catalog No.	Formulation	Size
RQ7322	0.5mg/ml if reconstituted with 0.2ml sterile DI water	100 ug

Bulk quote request

Availability	1-3 business days
Species Reactivity	Mouse
Format	Antigen affinity purified
Clonality	Polyclonal (rabbit origin)
Isotype	Rabbit IgG
Purity	Antigen affinity purified
Buffer	Lyophilized from 1X PBS with 2% Trehalose
UniProt	P17564
Applications	Western Blot : 0.5-1ug/ml Flow Cytometry : 1-3ug/million cells Direct ELISA : 0.1-0.5ug/ml
Limitations	This Ppp1r15a antibody is available for research use only.



Flow cytometry testing of mouse ANA-1 cells with Ppp1r15a antibody at 1ug/million cells (blocked with goat sera); Red=cells alone, Green=isotype control, Blue= Ppp1r15a antibody.



Wester blot testing of mouse stomach tissue lysate with Ppp1r15a antibody. Predicted molecular weight ~73 kDa, but commonly observed at up to ~110 kDa.

Description

Protein phosphatase 1 regulatory subunit 15A also known as growth arrest and DNA damage-inducible protein GADD34 is a protein that in humans is encoded by the PPP1R15A gene. Enables protein phosphatase binding activity and protein phosphatase regulator activity. Involved in several processes, including peptidyl-serine dephosphorylation; regulation of gene expression; and regulation of protein modification process. Acts upstream of or within endoplasmic reticulum unfolded protein response. Predicted to be located in several cellular components, including Golgi apparatus; cytosol; and mitochondrion. Predicted to be part of protein phosphatase type 1 complex. Predicted to be active in endoplasmic reticulum. Is expressed in several structures, including central nervous system; genitourinary system; gut; hemolymphoid system gland; and liver. Used to study thalassemia. Orthologous to human PPP1R15A (protein phosphatase 1 regulatory subunit 15A).

Application Notes

Optimal dilution of the Ppp1r15a antibody should be determined by the researcher.

Immunogen

Recombinant mouse protein (amino acids R14-R572) was used as the immunogen for the Ppp1r15a antibody.

Storage

After reconstitution, the Ppp1r15a antibody can be stored for up to one month at 4oC. For long-term, aliquot and store at -20oC. Avoid repeated freezing and thawing.