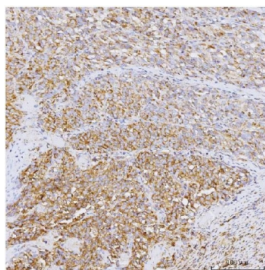


PPP1R15A Antibody / GADD34 (RQ7100)

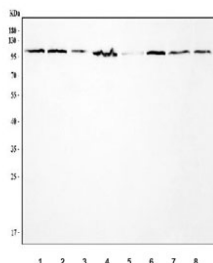
Catalog No.	Formulation	Size
RQ7100	0.5mg/ml if reconstituted with 0.2ml sterile DI water	100 ug

Bulk quote request

Availability	1-3 business days
Species Reactivity	Human, Rat
Format	Antigen affinity purified
Clonality	Polyclonal (rabbit origin)
Isotype	Rabbit IgG
Purity	Antigen affinity purified
Buffer	Lyophilized from 1X PBS with 2% Trehalose
UniProt	O75807
Localization	Nuclear, cytoplasmic
Applications	Western Blot : 0.5-1ug/ml Immunohistochemistry (FFPE) : 2-5ug/ml Direct ELISA : 0.1-0.5ug/ml
Limitations	This PPP1R15A antibody is available for research use only.



IHC staining of FFPE human melanoma tissue with PPP1R15A antibody. HIER: boil tissue sections in pH8 EDTA for 20 min and allow to cool before testing.



Western blot testing of 1) human K562, 2) human HEL, 3) human RT4, 4) human U-251, 5) human SiHa, 6) human U-87 MG, 7) human PC-3 and 8) rat testis tissue lysate with PPP1R15A antibody. Predicted molecular weight ~73 kDa, can be observed at up to ~110 kDa.

Description

Protein phosphatase 1 regulatory subunit 15A also known as growth arrest and DNA damage-inducible protein GADD34 is a protein that in humans is encoded by the PPP1R15A gene.

Application Notes

Optimal dilution of the PPP1R15A antibody should be determined by the researcher.

Immunogen

Recombinant human protein (amino acids A574-E602) was used as the immunogen for the PPP1R15A antibody.

Storage

After reconstitution, the PPP1R15A antibody can be stored for up to one month at 4oC. For long-term, aliquot and store at -20oC. Avoid repeated freezing and thawing.