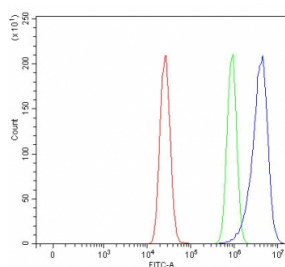


PPP1R11 Antibody / Protein phosphatase 1 regulatory subunit 11 (RQ8073)

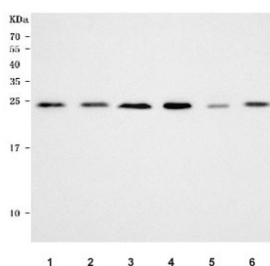
Catalog No.	Formulation	Size
RQ8073	0.5mg/ml if reconstituted with 0.2ml sterile DI water	100 ug

Bulk quote request

Availability	1-3 business days
Species Reactivity	Human, Mouse, Rat
Format	Antigen affinity purified
Clonality	Polyclonal (rabbit origin)
Isotype	Rabbit IgG
Purity	Antigen affinity purified
Buffer	Lyophilized from 1X PBS with 2% Trehalose
UniProt	O60927
Applications	Western Blot : 0.5-1ug/ml Flow Cytometry : 1-3ug/million cells Direct ELISA : 0.1-0.5ug/ml
Limitations	This PPP1R11 antibody is available for research use only.



Flow cytometry testing of fixed and permeabilized human MCF7 cells with PPP1R11 antibody at 1ug/million cells (blocked with goat sera); Red=cells alone, Green=isotype control, Blue= PPP1R11 antibody.



Western blot testing of 1) human HepG2, 2) human HeLa, 3) human Jurkat, 4) rat testis, 5) rat liver and 6) mouse testis tissue lysate with PPP1R11 antibody. Predicted molecular weight ~14 kDa, commonly observed at ~26 kDa. (Ref 1)

Description

Protein phosphatase 1 regulatory subunit 11 is an enzyme that in humans is encoded by the PPP1R11 gene. This gene encodes a specific inhibitor of protein phosphatase-1 (PP1) with a differential sensitivity toward the metal-independent and metal-dependent forms of PP1. The gene is located within the major histocompatibility complex class I region on chromosome 6.

Application Notes

Optimal dilution of the PPP1R11 antibody should be determined by the researcher.

Immunogen

E. coli-derived recombinant human protein (amino acids M1-H126) was used as the immunogen for the PPP1R11 antibody.

Storage

After reconstitution, the PPP1R11 antibody can be stored for up to one month at 4°C. For long-term, aliquot and store at -20°C. Avoid repeated freezing and thawing.

References (1)