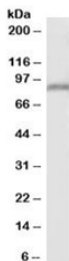


PPIG Antibody (R35559)

| Catalog No. | Formulation | Size |
|--------------|---|--------|
| R35559-100UG | 0.5 mg/ml in 1X TBS, pH7.3, with 0.5% BSA (US sourced) and 0.02% sodium azide | 100 ug |

[Bulk quote request](#)

| | |
|-----------------------------|---|
| Availability | 1-3 business days |
| Species Reactivity | Human |
| Predicted Reactivity | Cow, Dog, Mouse, Rat |
| Format | Antigen affinity purified |
| Host | Goat |
| Clonality | Polyclonal (goat origin) |
| Isotype | Goat Ig |
| Purity | Antigen affinity |
| Gene ID | 9360 |
| Applications | Western Blot : 1-3ug/ml ELISA (peptide) LOD : 1:1000 |
| Limitations | This PPIG antibody is available for research use only. |



Western blot testing of human kidney lysate with Ppig antibody at 2ug/ml. Predicted molecular weight: ~88kDa.

Description

Additional name(s) for this target protein: Peptidylprolyl isomerase G

Application Notes

Optimal dilution of the PPIG antibody should be determined by the researcher.

Immunogen

Amino acids RDHNSSNNSREKKAD were used as the immunogen for this PPIG antibody.

Storage

Aliquot and store the PPIG antibody at -20oC.