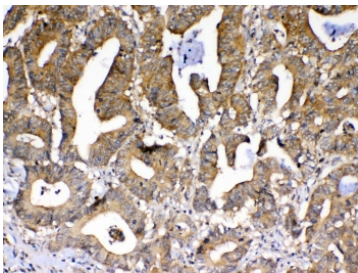


## PPID Antibody / Cyclophilin 40 (RQ4108)

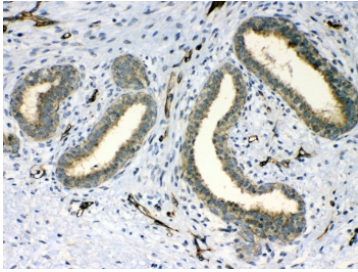
Catalog No.	Formulation	Size
RQ4108	0.5mg/ml if reconstituted with 0.2ml sterile DI water	100 ug

### Bulk quote request

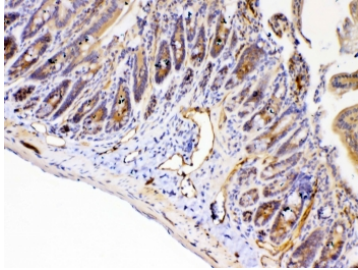
<b>Availability</b>	1-3 business days
<b>Species Reactivity</b>	Human, Mouse, Rat
<b>Format</b>	Antigen affinity purified
<b>Host</b>	Rabbit
<b>Clonality</b>	Polyclonal (rabbit origin)
<b>Isotype</b>	Rabbit IgG
<b>Purity</b>	Antigen affinity purified
<b>Buffer</b>	Lyophilized from 1X PBS with 2% Trehalose and 0.025% sodium azide
<b>UniProt</b>	Q08752
<b>Localization</b>	Cytoplasmic, nuclear
<b>Applications</b>	Western Blot : 0.5-1ug/ml IHC (FFPE) : 1-2ug/ml Flow Cytometry : 1-3ug/10 <sup>6</sup> cells Direct ELISA : 0.1-0.5ug/ml
<b>Limitations</b>	This PPID antibody is available for research use only.



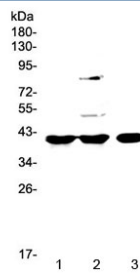
IHC testing of FFPE human rectal cancer tissue with PPID antibody at 1ug/ml. Required HIER: steam section in pH6 citrate buffer for 20 min and allow to cool prior to testing.



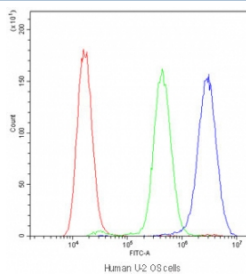
IHC testing of FFPE human breast cancer tissue with PPID antibody at 1ug/ml. Required HIER: steam section in pH6 citrate buffer for 20 min and allow to cool prior to testing.



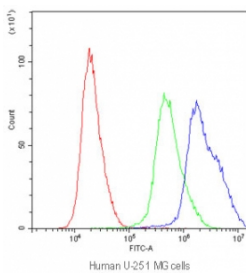
IHC testing of FFPE mouse intestine tissue with PPID antibody at 1ug/ml. Required HIER: steam section in pH6 citrate buffer for 20 min and allow to cool prior to testing.



Western blot testing of 1) rat spleen, 2) rat liver and 3) mouse testis lysate with PPID antibody at 0.5ug/ml. Predicted molecular weight ~41 kDa.



Flow cytometry testing of human U-2 OS cells with PPID antibody at 1ug/10<sup>6</sup> cells (blocked with goat sera); Red=cells alone, Green=isotype control, Blue=PPID antibody.



Flow cytometry testing of human U-251 MG cells with PPID antibody at 1ug/10<sup>6</sup> cells (blocked with goat sera); Red=cells alone, Green=isotype control, Blue=PPID antibody.

## Description

Peptidyl-prolyl cis-trans isomerase D, also known as PPID and Cyclophilin 40, is an enzyme which in humans is encoded by the PPID gene. The protein encoded by this gene is a member of the peptidyl-prolyl cis-trans isomerase (PPIase) family. The gene contains 10 exons and spans 14.2 kb of genomic DNA. By fluorescence in situ hybridization, the PPID gene is mapped to chromosome 4q31.3. PPIases catalyze the cis-trans isomerization of proline imidic peptide bonds in oligopeptides and accelerate the folding of proteins. This protein has been shown to possess PPIase activity and, similar to other family members, can bind to the immunosuppressant ciclosporin.

## Application Notes

Optimal dilution of the PPID antibody should be determined by the researcher.

## **Immunogen**

A recombinant human partial protein corresponding to amino acids N306-A370 was used as the immunogen for the PPID antibody.

## **Storage**

After reconstitution, the PPID antibody can be stored for up to one month at 4°C. For long-term, aliquot and store at -20°C. Avoid repeated freezing and thawing.