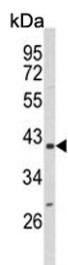


## PPlase D Antibody / PPID (F55003)

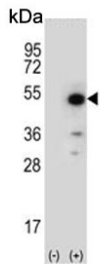
Catalog No.	Formulation	Size
F55003-0.4ML	In 1X PBS, pH 7.4, with 0.09% sodium azide	0.4 ml
F55003-0.08ML	In 1X PBS, pH 7.4, with 0.09% sodium azide	0.08 ml

[Bulk quote request](#)

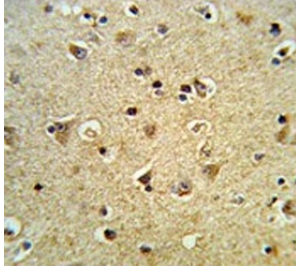
<b>Availability</b>	1-3 business days
<b>Species Reactivity</b>	Human, Mouse
<b>Format</b>	Purified
<b>Host</b>	Rabbit
<b>Clonality</b>	Polyclonal (rabbit origin)
<b>Isotype</b>	Rabbit Ig
<b>Purity</b>	Purified
<b>UniProt</b>	Q08752
<b>Localization</b>	Cytoplasmic, nuclear
<b>Applications</b>	Western Blot : 1:500-1:1000 Immunohistochemistry (FFPE) : 1:50-1:100 Flow Cytometry : 1:10-1:50 (1x10e6 cells)
<b>Limitations</b>	This PPlase D antibody is available for research use only.



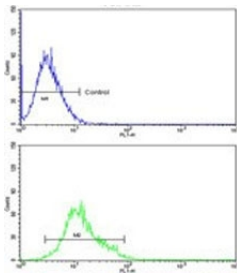
Western blot testing of mouse NIH 3T3 cell lysate with PPlase D antibody. Predicted molecular weight ~41 kDa.



Western blot testing of 1) non-transfected and 2) transfected 293 cell lysate with PPIase D antibody.



IHC testing of FFPE human brain tissue with PPIase D antibody. HIER: steam section in pH6 citrate buffer for 20 min and allow to cool prior to staining.



Flow cytometry testing of human K562 cells with PPIase D antibody; Blue=isotype control, Green= PPIase D antibody.

## Description

PPIases accelerate the folding of proteins. It catalyzes the cis-trans isomerization of proline imidic peptide bonds in oligopeptides.

## Application Notes

The stated application concentrations are suggested starting points. Titration of the PPIase D antibody may be required due to differences in protocols and secondary/substrate sensitivity.

## Immunogen

A portion of amino acids 85-115 from the human protein was used as the immunogen for the PPIase D antibody.

## Storage

Aliquot the PPIase D antibody and store frozen at -20°C or colder. Avoid repeated freeze-thaw cycles.