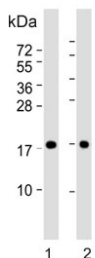


PPIA Antibody / Cyclophilin A (F54802)

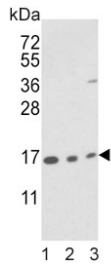
Catalog No.	Formulation	Size
F54802-0.4ML	In 1X PBS, pH 7.4, with 0.09% sodium azide	0.4 ml
F54802-0.08ML	In 1X PBS, pH 7.4, with 0.09% sodium azide	0.08 ml

[Bulk quote request](#)

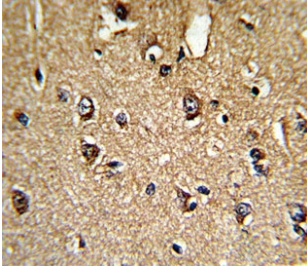
Availability	1-3 business days
Species Reactivity	Human, Mouse
Format	Purified
Host	Rabbit
Clonality	Polyclonal (rabbit origin)
Isotype	Rabbit Ig
Purity	Purified
UniProt	P62937
Localization	Cytoplasmic, secreted
Applications	Flow Cytometry : 1:10-1:50 (1x10e6 cells) Immunohistochemistry (FFPE) : 1:10-1:50 Western Blot : 1:500-1:1000
Limitations	This PPIA antibody is available for research use only.



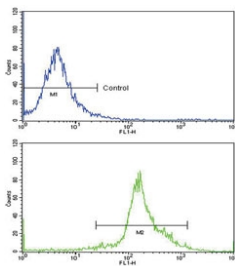
Western blot testing of human 1) A431 and 2) HeLa cell lysate with PPIA antibody.
Predicted molecular weight ~18 kDa.



Western blot testing of 1) human T-47D, 2) mouse brain and 3) mouse bladder lysate with PPIA antibody. Predicted molecular weight ~18 kDa.



IHC testing of FFPE human brain tissue with PPIA antibody. HIER: steam section in pH6 citrate buffer for 20 min and allow to cool prior to staining.



Flow cytometry testing of human WiDr cells with PPIA antibody; Blue=isotype control, Green= PPIA antibody.

Description

PPIA is a member of the peptidyl-prolyl cis-trans isomerase (PPIase) family. PPIases catalyze the cis-trans isomerization of proline imidic peptide bonds in oligopeptides and accelerate the folding of proteins. This protein is a cyclosporin binding-protein and may play a role in cyclosporin A-mediated immunosuppression. The protein can also interact with several HIV proteins, including p55 gag, Vpr, and capsid protein, and has been shown to be necessary for the formation of infectious HIV virions.

Application Notes

The stated application concentrations are suggested starting points. Titration of the PPIA antibody may be required due to differences in protocols and secondary/substrate sensitivity.

Immunogen

A portion of amino acids 8-37 from the human protein was used as the immunogen for the PPIA antibody.

Storage

Aliquot the PPIA antibody and store frozen at -20oC or colder. Avoid repeated freeze-thaw cycles.

