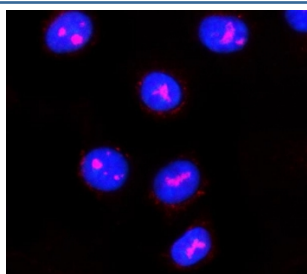


## PPAN Antibody / Suppressor of SWI4 1 homolog (RQ8028)

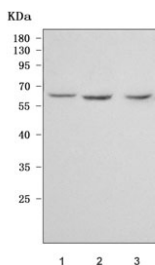
Catalog No.	Formulation	Size
RQ8028	0.5mg/ml if reconstituted with 0.2ml sterile DI water	100 ug

**Bulk quote request**

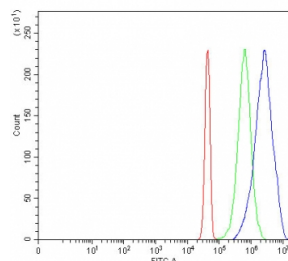
<b>Availability</b>	1-3 business days
<b>Species Reactivity</b>	Human
<b>Format</b>	Antigen affinity purified
<b>Host</b>	Rabbit
<b>Clonality</b>	Polyclonal (rabbit origin)
<b>Isotype</b>	Rabbit IgG
<b>Purity</b>	Antigen affinity purified
<b>Buffer</b>	Lyophilized from 1X PBS with 2% Trehalose
<b>UniProt</b>	Q9NQ55
<b>Localization</b>	Nucleolus
<b>Applications</b>	Western Blot : 0.5-1ug/ml Flow Cytometry : 1-3ug/million cells Immunofluorescence : 5ug/ml Direct ELISA : 0.1-0.5ug/ml
<b>Limitations</b>	This PPAN antibody is available for research use only.



Immunofluorescent staining of FFPE human A549 cells with PPAN antibody (red) and DAPI nuclear stain (blue). HIER: steam section in pH6 citrate buffer for 20 min.



Western blot testing of human 1) HeLa, 2) 293T and 3) PC-3 cell lysate with PPAN antibody. Predicted molecular weight: 53-58 kDa (multiple isoforms).



Flow cytometry testing of fixed and permeabilized human JK cells with PPAN antibody at 1ug/million cells (blocked with goat sera); Red=cells alone, Green=isotype control, Blue=PPAN antibody.

## Description

Suppressor of SWI4 1 homolog is a protein that in humans is encoded by the PPAN gene. The protein encoded by this gene is an evolutionarily conserved protein similar to yeast SSF1 as well as to the gene product of the *Drosophila* gene *peter pan* (*ppan*). SSF1 is known to be involved in the second step of mRNA splicing. Both SSF1 and *ppan* are essential for cell growth and proliferation. Exogenous expression of this gene was reported to reduce the anchorage-independent growth of some tumor cells. Read-through transcription of this gene with P2RY11/P2Y(11), an adjacent downstream gene that encodes an ATP receptor, has been found. These read-through transcripts are ubiquitously present and up-regulated during granulocyte differentiation.

## Application Notes

Optimal dilution of the PPAN antibody should be determined by the researcher.

## Immunogen

*E. coli*-derived recombinant human protein (amino acids R20-E288) was used as the immunogen for the PPAN antibody.

## Storage

After reconstitution, the PPAN antibody can be stored for up to one month at 4°C. For long-term, aliquot and store at -20°C. Avoid repeated freezing and thawing.