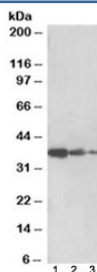


PP2A Antibody (R34134)

Catalog No.	Formulation	Size
R34134-100UG	0.5 mg/ml in 1X TBS, pH7.3, with 0.5% BSA (US sourced) and 0.02% sodium azide	100 ug

[Bulk quote request](#)

Availability	1-3 business days
Species Reactivity	Human, Mouse, Rat
Predicted Reactivity	Cow, Dog
Format	Antigen affinity purified
Host	Goat
Clonality	Polyclonal (goat origin)
Isotype	Goat Ig
Purity	Antigen affinity
Gene ID	5524
Applications	Western Blot : 0.5-2ug/ml ELISA (peptide) LOD : 1:32000
Limitations	This PP2A antibody is available for research use only.



Western blot testing of human liver lysate [lane 1], mouse liver [lane 2] and rat liver [lane 3] with PP2A antibody at 0.5ug/ml. Expected molecular weight: 37/41/33/32 kDa (alpha/beta/delta/epsilon isoforms).

Description

Additional name(s) for this target protein: Protein phosphatase 2A activator, regulatory subunit 4; PPP2R4

Application Notes

Optimal dilution of the PP2A antibody should be determined by the researcher.

Immunogen

Amino acids GSLLPIHPVTSG were used as the immunogen for this PP2A antibody.

Storage

Aliquot and store the PP2A antibody at -20oC.