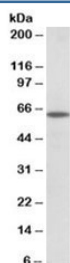


## POU6F2 Antibody (R35763)

Catalog No.	Formulation	Size
R35763-100UG	0.5 mg/ml in 1X TBS, pH7.3, with 0.5% BSA (US sourced) and 0.02% sodium azide	100 ug

[Bulk quote request](#)

Availability	1-3 business days
Species Reactivity	Human, Mouse
Predicted Reactivity	Cow, Rat
Format	Antigen affinity purified
Host	Goat
Clonality	Polyclonal (goat origin)
Isotype	Goat Ig
Purity	Antigen affinity
Gene ID	11281
Applications	Western Blot : 0.3-1ug/ml ELISA (peptide) LOD : 1:16000
Limitations	This POU6F2 antibody is available for research use only.



Western blot testing of mouse eye lysate with POU6F2 antibody at 0.3ug/ml. Predicted molecular weight: ~73kDa.

### Description

Additional name(s) for this target protein: POU class 6 homeobox 2

### Application Notes

Optimal dilution of the POU6F2 antibody should be determined by the researcher.

## Immunogen

Amino acids RSEMNAELRGEDK were used as the immunogen for this POU6F2 antibody.

## Storage

Aliquot and store the POU6F2 antibody at -20oC.