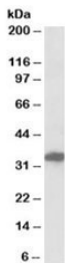


POU6F1 Antibody (R34025)

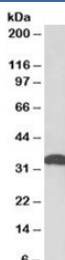
Catalog No.	Formulation	Size
R34025-100UG	0.5 mg/ml in 1X TBS, pH7.3, with 0.5% BSA (US sourced) and 0.02% sodium azide	100 ug

[Bulk quote request](#)

Availability	1-3 business days
Species Reactivity	Human, Mouse
Predicted Reactivity	Cow, Dog, Rat
Format	Antigen affinity purified
Host	Goat
Clonality	Polyclonal (goat origin)
Isotype	Goat Ig
Purity	Antigen affinity
Gene ID	5463
Applications	Western Blot : 0.3-1ug/ml ELISA (peptide) LOD : 1:128000
Limitations	This POU6F1 antibody is available for research use only.



Western blot testing of human cerebral cortex lysate with POU6F1 antibody at 0.3ug/ml.
Predicted/observed molecular weight: ~33kDa.



Western blot testing of mouse fetal brain lysate with POU6F1 antibody at 0.05ug/ml.
Predicted/observed molecular weight: ~33kDa.

Description

Additional name(s) for this target protein: POU class 6 homeobox 1, BRN5, MPOU, TCFB1

Application Notes

Optimal dilution of the POU6F1 antibody should be determined by the researcher.

Immunogen

Amino acids ETPTVSQLVSKPHTP were used as the immunogen for this POU6F1 antibody.

Storage

Aliquot and store the POU6F1 antibody at -20oC.