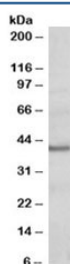


## POU4F3 Antibody (R33696)

Catalog No.	Formulation	Size
R33696-100UG	0.5 mg/ml in 1X TBS, pH7.3, with 0.5% BSA (US sourced) and 0.02% sodium azide	100 ug

[Bulk quote request](#)

Availability	1-3 business days
Species Reactivity	Human, Mouse
Predicted Reactivity	Dog, Rat
Format	Antigen affinity purified
Clonality	Polyclonal (goat origin)
Isotype	Goat Ig
Purity	Antigen affinity
Gene ID	5459
Applications	Western Blot : 0.2-0.6ug/ml ELISA (peptide) LOD : 1:8000
Limitations	This POU4F3 antibody is available for research use only.



Western blot testing of human heart lysate with POU4F3 antibody at 0.2ug/ml. Predicted molecular weight: ~37kDa.

## Description

Additional name(s) for this target protein: POU class 4 homeobox 3

## Application Notes

Optimal dilution of the POU4F3 antibody should be determined by the researcher.

1. This POU4F3 antibody does not cross react with similar proteins POU4F1 and POU4F2.

## Immunogen

Amino acids EAAYREKNSKPE were used as the immunogen for this POU4F3 antibody.

## Storage

Aliquot and store the POU4F3 antibody at -20oC.