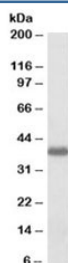


POU2AF1 Antibody (R36402)

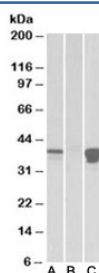
Catalog No.	Formulation	Size
R36402-100UG	0.5 mg/ml in 1X TBS, pH7.3, with 0.5% BSA (US sourced) and 0.02% sodium azide	100 ug

[Bulk quote request](#)

Availability	1-3 business days
Species Reactivity	Human
Predicted Reactivity	Cow, Dog, Mouse, Rat
Format	Antigen affinity purified
Host	Goat
Clonality	Polyclonal (goat origin)
Isotype	Goat Ig
Purity	Antigen affinity
Gene ID	5450
Applications	Western Blot : 0.5-2ug/ml ELISA (peptide) LOD : 1:32000
Limitations	This POU2AF1 antibody is available for research use only.



Western blot testing of Daudi lysate with POU2AF1 antibody at 0.3ug/ml. Predicted molecular weight: ~28/35-40kDa (unmodified/ubiquitinated).



Western blot of HEK293 lysate overexpressing human POU2AF1-FLAG probed with POU2AF1 antibody (1ug/ml) in lane A and with anti-FLAG (1/3000) in lane C. Mock-transfected probed with anti-BOB-1 (1ug/ml) in lane B. Predicted molecular weight: ~28/35-40kDa (unmodified/ubiquitinated).

Description

Additional name(s) for this target protein: POU class 2 associating factor 1; BOB-1

Application Notes

Optimal dilution of the POU2AF1 antibody should be determined by the researcher.

Immunogen

Amino acids YTEYVPHEAVSCP were used as the immunogen for this POU2AF1 antibody.

Storage

Aliquot and store the POU2AF1 antibody at -20oC.