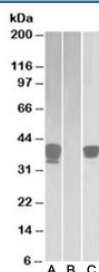


POU2AF1 Antibody (R33623)

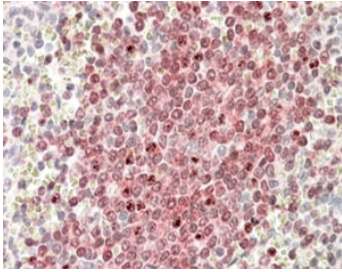
Catalog No.	Formulation	Size
R33623-100UG	0.5 mg/ml in 1X TBS, pH7.3, with 0.5% BSA (US sourced) and 0.02% sodium azide	100 ug

[Bulk quote request](#)

Availability	1-3 business days
Species Reactivity	Human
Predicted Reactivity	Cow, Dog
Format	Antigen affinity purified
Host	Goat
Clonality	Polyclonal (goat origin)
Isotype	Goat Ig
Purity	Antigen affinity
Gene ID	5450
Applications	Western Blot : 1-3ug/ml Immunohistochemistry (FFPE) : 3-5ug/ml ELISA (peptide) LOD : 1:8000
Limitations	This POU2AF1 antibody is available for research use only.



Western blot of HEK293 lysate overexpressing human BOB1-FLAG probed with BOB-1 antibody (1ug/ml) in lane A and with anti-FLAG (1/3000) in lane C. Mock-transfected probed with anti-BOB-1 (1ug/ml) in lane B. Predicted molecular weight: ~28/35-40kDa (unmodified/ubiquitinated).



IHC testing of FFPE human spleen shows nuclear staining in the germinal center with stronger nucleoli staining in some of the B cells. POU2AF1 antibody was used at 3ug/ml.

Description

Additional name(s) for this target protein: POU class 2 associating factor 1

Application Notes

Optimal dilution of the POU2AF1 antibody should be determined by the researcher.

Immunogen

Amino acids DSDAYALNHTLSVE were used as the immunogen for this POU2AF1 antibody.

Storage

Aliquot and store the POU2AF1 antibody at -20oC.