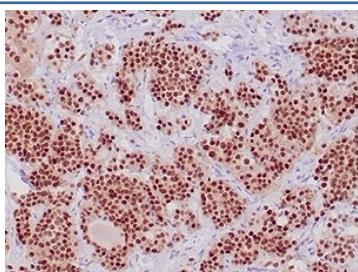


POU1F1 Antibody / PIT-1 / GHF-1 [clone PIT1/7262] (V4044)

Catalog No.	Formulation	Size
V4044-100UG	0.2 mg/ml in 1X PBS with 0.1 mg/ml BSA (US sourced), 0.05% sodium azide	100 ug
V4044-20UG	0.2 mg/ml in 1X PBS with 0.1 mg/ml BSA (US sourced), 0.05% sodium azide	20 ug
V4044SAF-100UG	1 mg/ml in 1X PBS; BSA free, sodium azide free	100 ug

[Bulk quote request](#)

Availability	1-3 business days
Species Reactivity	Human
Format	Purified
Clonality	Monoclonal (mouse origin)
Isotype	Mouse IgG2b, kappa
Clone Name	PIT1/7262
Purity	Protein A/G affinity
UniProt	P28069
Localization	Nucleus
Applications	Immunohistochemistry (FFPE) : 1-2ug/ml
Limitations	This POU1F1 antibody is available for research use only.



IHC staining of FFPE human pituitary tissue with POU1F1 antibody (clone PIT1/7262).
 HIER: boil tissue sections in pH 9 10mM Tris with 1mM EDTA for 20 min and allow to cool before testing.

Description

Transcriptional regulators play a critical role in development by mediating tissue- and cell-specific transcription. POU domain factors are transcriptional regulators characterized by a bipartite DNA binding domain, which consists of two highly conserved regions, tethered by a variable linker of 14-26 amino acids. Pit-1, also known as growth hormone factor-1 (GHF-1), a member of the POU homeodomain family, is essential for the normal development of the anterior

pituitary gland, where it is required for the formation of somatotropes, lactotropes and thyrotropes. In somatotropes and lactotropes, Pit-1 activates the production of growth hormone and Prolactin, respectively. In addition, Pit-1 acts as a repressor of gene expression, which allows for the differentiation of specific cell types. Pit-1 is expressed as two alternatively spliced products, designated Pit-1a and Pit-1b, which differ in their trans-activation ability. Mutations in the Pit-1 gene are believed to result in combined pituitary hormone deficiency (CPHD) for growth hormone, Prolactin and thyroid stimulating hormone. The gene which encodes Pit-1 maps to human chromosome 3p11.2.

Application Notes

Optimal dilution of the POU1F1 antibody should be determined by the researcher.

Immunogen

Recombinant human full-length protein was used as the immunogen for the POU1F1 antibody.

Storage

Aliquot the POU1F1 antibody and store frozen at -20oC or colder. Avoid repeated freeze-thaw cycles.