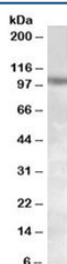


## Polycystin 2 Antibody (R33950)

Catalog No.	Formulation	Size
R33950-100UG	0.5 mg/ml in 1X TBS, pH7.3, with 0.5% BSA (US sourced) and 0.02% sodium azide	100 ug

[Bulk quote request](#)

Availability	1-3 business days
Species Reactivity	Human
Predicted Reactivity	Cow, Mouse, Rat
Format	Antigen affinity purified
Clonality	Polyclonal (goat origin)
Isotype	Goat Ig
Purity	Antigen affinity
Gene ID	5311
Applications	Western Blot : 1-3ug/ml ELISA (peptide) LOD : 1:2000
Limitations	This Polycystin 2 antibody is available for research use only.



Western blot testing of HeLa lysate with Polycystin 2 antibody at 1ug/ml. Predicted molecular weight: ~110kDa.

## Description

Additional name(s) for this target protein: Polycystic kidney disease 2; PKD2

## Application Notes

Optimal dilution of the Polycystin 2 antibody should be determined by the researcher.

## Immunogen

Amino acids ERAKLKRREVLGR were used as the immunogen for this Polycystin 2 antibody.

## **Storage**

Aliquot and store the Polycystin 2 antibody at -20oC.